

Piston Accumulators

An Overview

The variety and versatility of the piston-type design allows it to be utilized in over 90% of all potential applications. From a volume of a few cubic inches to hundreds of gallons, and up to 20,000 PSI MAWP, the piston-type hydro-pneumatic accumulator can meet the diverse needs of many industries with a standard or custom design.

Tobul has developed several distinct families of standard piston-type products, based on physical dimensions, MAWP (Maximum Allowable Working Pressure), and fluid volume. Each of the families is listed in this catalog and can be utilized as the basis for custom designs. Tobul piston-type product families are:

- **“ECONOLATOR®” Series**
- **3000 PSI MAWP Series**
- **5000 PSI MAWP Series**
- **10,000 PSI MAWP Series**
- **Custom Design Series including “Big Bore®” Series**

Tobul’s ability to provide a variety of raw materials, (carbon steel, stainless steel, and various alloys) seal configurations and compounds, (Buna-N, EPR, Viton, Kalrez, Teflon, etc.) fluid and gas port configurations, and design characteristics to best meet the needs of the end customer makes them **“A Name for Excellence in Fluid Energy Control.”**

Note: Catalog contains standard production models; other pressure ratings, sizes and capacities are available upon request from Tobul Sales Engineering.

The “Econolator®” Series...

2.2AL & 4.5AL (Non-Repairable)

The Econolator...

Tobul’s permanently sealed accumulator specifically designed for systems with operating pressures up to 2500 PSI MAWP. It has been developed to meet requirements of the Original Equipment Manufacturer (OEM) market.

Dependable Construction...

Heavy duty steel cylinder and end caps are precision machine-welded for rugged durability. The hydraulically balanced aluminum piston, with a “T” ring seal and Teflon bearing, is precisely fitted into a “mirror-finished” cylinder.

Efficient Operation...

The long operating life design of the Tobul ECONOLATOR® includes such outstanding features as:

- Lightweight, low inertia aluminum piston
- Low friction “T” ring offering a positive seal which cannot roll or twist while in operation
- Pressure actuated Back-up rings which prevent seal extrusion and provide internal surface wiping
- Teflon guide ring providing low friction bearing and additional internal wiping action

Wide Range Of Applications...

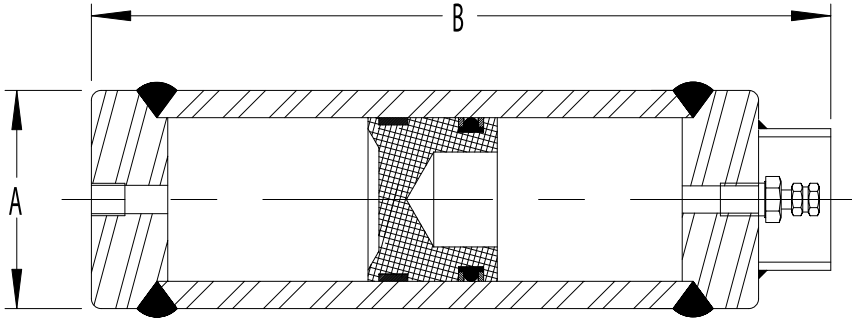
Some typical uses are for shock absorbers, pressure storage units, and pulsation dampeners. The ECONOLATOR® is ideal for lift trucks, “cherry pickers” and other mobile equipment, as well as machine tools, presses, circuit breakers, injection molding machines, starters for diesel engines, power units, etc. It is ideally suited to the OEM market.

Econolator®

2.2AL Econolator Accumulators 2,500 PSI (172 Bar)

MODEL NUMBER	GAS CAPACITY		FLUID CAPACITY		DRY WEIGHT		DIMENSION			
	In. ³	Cm. ³	Gallon	Liters	Lbs.	Kg.	A		B	
							In.	mm.	In.	mm.
2.2AL-5	16	257	0.0625	0.24	3	1	2.375	60	8.75	222
2.2AL-1	31	501	0.125	0.5	4	2	2.375	60	13.5	343
2.2AL-2	61	991	0.25	1	7	3	2.375	60	23	584

Non-Repairable



GENERAL DESIGN DATA

Maximum Working Pressure 2,500 PSI (172 Bar)
 Maximum Proof Pressure 3,750 PSI (259 Bar)
 Operating Temperature (Buna/Nitrile) -20° to +200°F (-28° to 93°C)
 Fluid Port Size SAE-8
 (Note: Optional fluid port sizes and styles available)
 Replacement Gas Valve Pt. # 2523

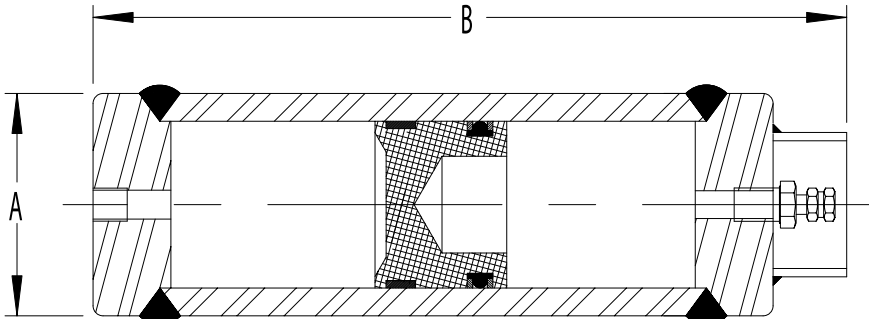
Standard seal material for petroleum base oil.
 Seals available for other fluids.

ASME and other certification requirements may entail changes in materials, strengths, dimensional specifications and design parameters from those illustrated in this catalog.

4.5AL Econolator Accumulators 2,500 PSI (172 Bar)

MODEL NUMBER	GAS CAPACITY		FLUID CAPACITY		DRY WEIGHT		DIMENSION			
	In. ³	Cm. ³	Gallon	Liters	Lbs.	Kg.	A		B	
							In.	mm.	In.	mm.
4.5AL-2	74	1,213	0.25	1	15	7	4.625	118	9.875	251
4.5AL-4	132	2,163	0.5	2	18	8	4.625	118	14.25	362
4.5AL-8	249	4,080	1	4	23	10	4.625	118	23	584
4.5AL-12	364	5,965	1.5	6	30	14	4.625	118	31.75	806
4.5AL-16	480	7,866	2	8	36	16	4.625	118	40.5	1,029
4.5AL-20	595	9,750	2.5	10	42	19	4.625	118	49.25	1,251
4.5AL-24	710	11,634	3	12	48	22	4.625	118	58	1,473

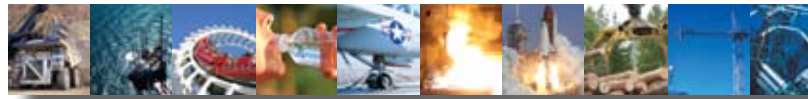
Non-Repairable



GENERAL DESIGN DATA

Maximum Working Pressure 2,500 PSI (172 Bar)
 Maximum Proof Pressure 3,750 PSI (259 Bar)
 Operating Temperature (Buna/Nitrile) -20° to +200°F (-28° to 93°C)
 Fluid Port Size SAE-16
 (Note: Optional fluid port sizes and styles available)
 Replacement Gas Valve Pt. # 2523

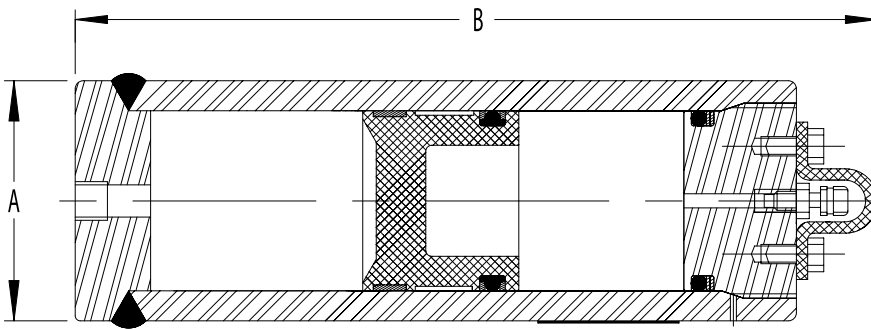
Standard seal material for petroleum base oil.
 Seals available for other fluids.



3,000 PSI Series

3AT30 Accumulators 3,000 PSI (207 Bar)

MODEL NUMBER	GAS CAPACITY		FLUID CAPACITY		DRY WEIGHT		DIMENSION			
	In. ³	Cm. ³	Gallon	Liters	Lbs.	Kg.	A		B	
							In.	mm.	In.	mm.
3AT30-5	15	246	0.0625	0.24	7	3	3	76	8.5	216
3AT30-1	32	524	0.125	0.5	8	4	3	76	11.375	289
3AT30-2	62	1,016	0.25	1	11	5	3	76	17.5	445
3AT30-4	116	1,901	0.5	2	19	9	3	76	29.3125	745



GENERAL DESIGN DATA

Maximum Working Pressure 3,000PSI (207 Bar)
 Maximum Proof Pressure 4,500 PSI (310 Bar)
 Operating Temperature (Buna/Nitrile) -20° to +200°F (-28° to 93°C)
 Fluid Port Size SAE-8
 (Note: Optional fluid port sizes and styles available)

Standard seal material for petroleum base oil.
 Seals available for other fluids.

ASME and other certification requirements may entail changes in materials, strengths, dimensional specifications and design parameters from those illustrated in this catalog.

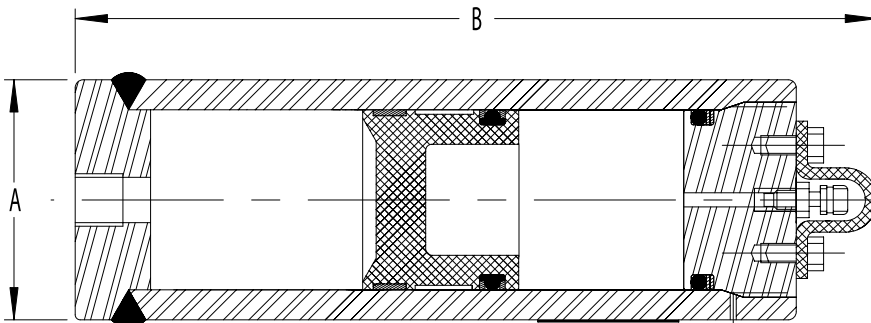
Specifications are subject to change without notice.

COMPLETE SEAL KITS	
TYPE	PART NO.
Buna-N	3AT30-G40T-NST
Viton	3AT30-G40T-ETT
EPR	3AT30-G40T-HTT

See Data Sheets for breakdown of parts.

4.7A30 Accumulators 3,000 PSI (207 Bar)

MODEL NUMBER	GAS CAPACITY		FLUID CAPACITY		DRY WEIGHT		DIMENSION			
	In. ³	Cm. ³	Gallon	Liters	Lbs.	Kg.	A		B	
							In.	mm.	In.	mm.
4.7A30-2	69	1,131	0.25	1	26	12	4.75	121	11.25	286
4.7A30-4	127	2,081	0.5	2	31	14	4.75	121	15.5	394
4.7A30-8	242	3,966	1	4	41	19	4.75	121	24.125	613
4.7A30-12	358	5,867	1.5	6	52	24	4.75	121	32.75	832
4.7A30-16	473	7,751	2	8	62	28	4.75	121	41.5	1,054
4.7A30-20	589	9,652	2.5	10	73	33	4.75	121	50.125	1,273
4.7A30-24	704	11,537	3	12	90	41	4.75	121	58.75	1,492



GENERAL DESIGN DATA

Maximum Working Pressure 3,000PSI (207 Bar)
 Maximum Proof Pressure 4,500 PSI (310 Bar)
 Operating Temperature (Buna/Nitrile) -20° to +200°F (-28° to 93°C)
 Fluid Port Size SAE-16
 (Note: Optional fluid port sizes and styles available)

Standard seal material for petroleum base oil.
 Seals available for other fluids.

ASME code stamp is not available as a standard.

ASME and other certification requirements may entail changes in materials, strengths, dimensional specifications and design parameters from those illustrated in this catalog.

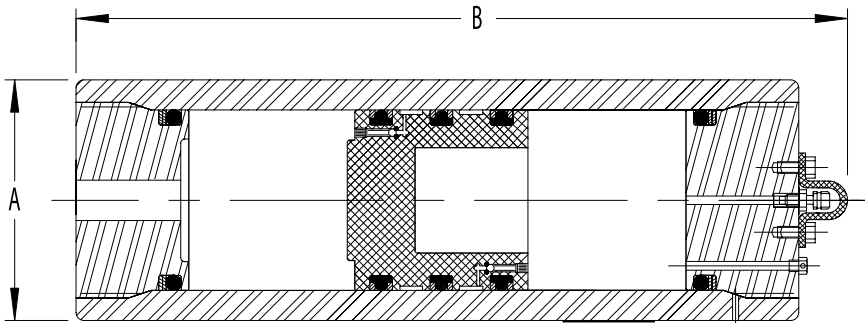
Specifications are subject to change without notice.

COMPLETE SEAL KITS	
TYPE	PART NO.
Buna-N	4.7A30-G40T-NST
Viton	4.7A30-G40T-ETT
EPR	4.7A30-G40T-HTT

See Data Sheets for breakdown of parts.

6.7A30 Accumulators 3,000 PSI (207 Bar)

MODEL NUMBER	GAS CAPACITY		FLUID CAPACITY		DRY WEIGHT		DIMENSION			
	In. ³	Cm. ³	Gallon	Liters	Lbs.	Kg.	A		B	
6.7A30-8	252	4,130	1	4	97	44	6.75	171	18.25	464
6.7A30-12	369	6,047	1.5	6	112	51	6.75	171	22.625	575
6.7A30-20	599	9,816	2.5	10	143	65	6.75	171	31.125	797
6.7A30-40	1176	19,271	5	19	221	100	6.75	171	53.125	1,356
6.7A30-60	1754	28,743	7.5	28	300	136	6.75	171	75.125	1,915
6.7A30-80	2331	38,198	10	38	377	171	6.75	171	97.125	2,473



GENERAL DESIGN DATA

Maximum Working Pressure 3,000PSI (172 Bar)
 Maximum Proof Pressure 4,500 PSI (259 Bar)
 Operating Temperature (Buna/Nitrile) -20° to +200°F (-28° to 93°C)
 Fluid Port Size SAE 1-1/2" 4-Bolt Code 61
 (Note: Optional fluid port sizes and styles available)

Standard seal material for petroleum base oil.
 Seals available for other fluids.

ASME and other certification requirements may entail changes in materials, strengths, dimensional specifications and design parameters from those illustrated in this catalog.

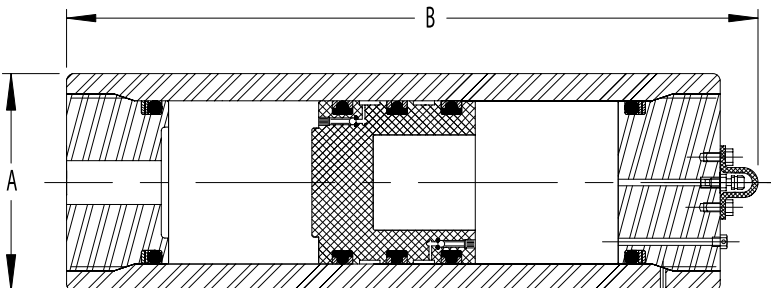
Specifications are subject to change without notice.

COMPLETE SEAL KITS	
TYPE	PART NO.
Buna-N	6.7A30-G40T-NST
Viton	6.7A30-G40T-ETT
EPR	6.7A30-G40T-HTT

See Data Sheets for breakdown of parts.

9A30 Accumulators 3,000 PSI (207 Bar)

MODEL NUMBER	GAS CAPACITY		FLUID CAPACITY		DRY WEIGHT		DIMENSION			
	In. ³	Cm. ³	Gallon	Liters	Lbs.	Kg.	A		B	
9A30-20	612	10,030	2.5	9	192	87	9	229	23.25	591
9A30-40	1,191	19,515	5	19	256	116	9	229	35.875	912
9A30-60	1,765	28,925	7.5	28	320	145	9	229	48.5	1,232
9A30-80	2,347	38,465	10	38	385	175	9	229	61.25	1,556
9A30-100	2,918	47,819	12.5	47	448	203	9	229	73.75	1,873
9A30-120	3,495	57,266	15	57	513	232	9	229	86.375	2,194
9A30-140	4,071	66,713	17.5	66	576	261	9	229	99	2,515
9A30-160	4,648	76,160	20	76	641	291	9	229	111.625	2,835
9A30-200	5,806	95,148	25	95	770	349	9	229	137	3,480
9A30-240	6,959	114,042	30	114	898	407	9	229	162.25	4,121
9A30-320	9,265	151,831	40	151	1,154	523	9	229	212.75	5,404
9A30-400	11,571	189,619	50	189	1,411	640	9	229	263.25	6,687



GENERAL DESIGN DATA

Maximum Working Pressure 3,000PSI (207 Bar)
 Maximum Proof Pressure 4,500 PSI (310 Bar)
 Operating Temperature (Buna/Nitrile) -20° to +200°F (-28° to 93°C)
 Fluid Port Size SAE 2" 4-Bolt Code 61
 (Note: Optional fluid port sizes and styles available)

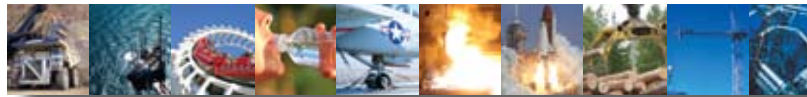
Standard seal material for petroleum base oil. Seals available for other fluids.

ASME and other certification requirements may entail changes in materials, strengths, dimensional specifications and design parameters from those illustrated in this catalog.

Specifications are subject to change without notice.

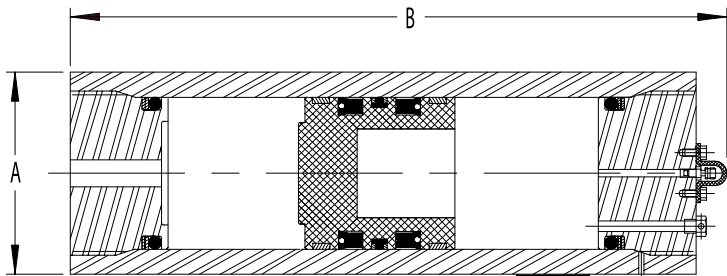
COMPLETE SEAL KITS	
TYPE	PART NO.
Buna-N	9A30-G40T-NST
Viton	9A30-G40T-ETT
EPR	9A30-G40T-HTT

See Data Sheets for breakdown of parts.



14A30 Accumulators 3,000 PSI (207 Bar)

MODEL NUMBER	GAS CAPACITY		FLUID CAPACITY		DRY WEIGHT		DIMENSION			
	In. ³	Cm. ³	Gallon	Liters	Lbs.	Kg.	A		B	
							In.	mm.	In.	mm.
14A30-120	3,575	58,582	15	56	899	408	14	356	46.125	1,172
14A30-140	4,255	69,731	17.5	66	958	435	14	356	51.25	1,302
14A30-160	4,835	79,230	20	75	1,018	462	14	356	56.375	1,432
14A30-184	5,528	90,581	23	86	1,088	494	14	356	62.5	1,588
14A30-200	6,037	98,921	25	95	1,140	517	14	356	67	1,702
14A30-240	7,159	117,315	30	113	1,255	569	14	356	77	1,954
14A30-320	9,458	154,984	40	151	1,490	676	14	356	97.25	2,470
14A30-400	11,776	192,977	50	189	1,727	783	14	356	117.75	2,991
14A30-480	14,123	231,434	60	227	1,967	892	14	356	138.5	3,518
14A30-560	16,427	269,195	70	265	2,202	999	14	356	158.875	4,035
14A30-640	18,732	306,957	80	303	2,438	1,106	14	356	179.25	4,553
14A30-720	21,050	344,950	90	341	2,675	1,213	14	356	199.75	5,074
14A30-800	23,355	382,712	100	379	2,910	1,320	14	356	220.125	5,591



GENERAL DESIGN DATA

Maximum Working Pressure 3,000PSI (207 Bar)
 Maximum Proof Pressure 4,500 PSI (310 Bar)
 Operating Temperature
 (Buna/Nitrile) -20° to +200°F (-28° to 93°C)
 Fluid Port Size SAE 2" 4-Bolt Code 61
 (Note: Optional fluid port sizes and styles available)

Standard seal material for petroleum base oil.
 Seals available for other fluids.

*Diameter for ASME code units is 14.38" (365 mm) and model number is 14.3A30-XXX.

ASME and other certification requirements may entail changes in materials, strengths, dimensional specifications and design parameters from those illustrated in this catalog.

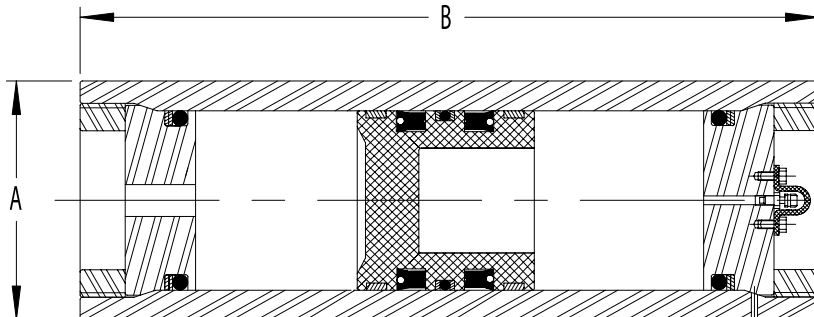
Specifications are subject to change without notice.

COMPLETE SEAL KITS	
TYPE	PART NO.
Buna-N	14A30-G40P-NST
Viton	14A30-G40P-ETT
EPR	14A30-G40P-HTT

See Data Sheets for breakdown of parts.

24A30 Accumulators 3,000 PSI (207 Bar)

MODEL NUMBER	GAS CAPACITY		FLUID CAPACITY		DRY WEIGHT		DIMENSION			
	In. ³	Cm. ³	Gallon	Liters	Lbs.	Kg.	A		B	
							In.	mm.	In.	mm.
24A30-400	12,555	205,750	50	189	3,687	1,672	23.75	603	65.4375	1,662
24A30-800	24,100	394,944	100	379	5,027	2,280	23.75	603	102.1875	2,596
24A30-1200	35,640	584,045	150	568	6,370	2,890	23.75	603	139	3,529
24A30-1600	47,190	773,316	200	757	7,711	3,498	23.75	603	175.75	4,463



GENERAL DESIGN DATA

Maximum Working Pressure 3,000PSI (207 Bar)
 Maximum Proof Pressure 4,500 PSI (310 Bar)
 Operating Temperature
 (Buna/Nitrile) -20° to +200°F (-28° to 93°C)
 Fluid Port Size SAE 2" 4-Bolt Code 61
 (Note: Optional fluid port sizes and styles available)

Standard seal material for petroleum base oil.
 Seals available for other fluids.

ASME and other certification requirements may entail changes in materials, strengths, dimensional specifications and design parameters from those illustrated in this catalog.

Specifications are subject to change without notice.

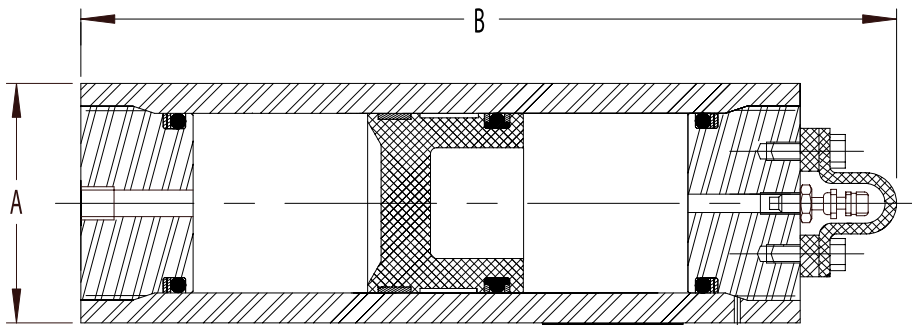
COMPLETE SEAL KITS	
TYPE	PART NO.
Buna-N	24A30-G40P-NST
Viton	24A30-G40P-ETT
EPR	24A30-G40P-HTT

See Data Sheets for breakdown of parts.

5,000 PSI Series

3.2AT50 Accumulators 5,000 PSI (345 Bar)

MODEL NUMBER	GAS CAPACITY		FLUID CAPACITY		DRY WEIGHT		DIMENSION			
	In. ³	Cm. ³	Gallon	Liters	Lbs.	Kg.	A		B	
							In.	mm.	In.	mm.
3.2AT50-5	14	226	0.0625	0.22	12	5	3.25	83	9.06	230
3.2AT50-1	30	498	0.125	0.49	15	7	3.25	83	12.44	316
3.2AT50-2	61	1000	0.25	1.00	21	10	3.25	83	18.69	475
3.2AT50-4	116	1900	0.5	2.00	32	14	3.25	83	29.88	759



GENERAL DESIGN DATA

Maximum Working Pressure 5,000 PSI (345 Bar)
 Maximum Proof Pressure 7,500 PSI (517 Bar)
 Operating Temperature (Buna/Nitrile) -20° to +200°F (-28° to 93°C)
 Fluid Port Size SAE-8
 (Note: Optional fluid port sizes and styles available)

Standard seal material for petroleum base oil.
 Seals available for other fluids.
 ASME code stamp is not available as a standard.

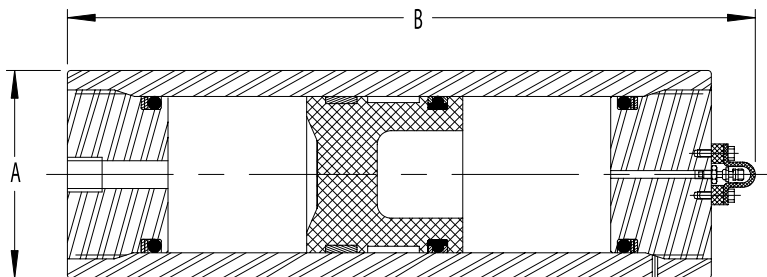
ASME and other certification requirements may entail changes in materials, strengths, dimensional specifications and design parameters from those illustrated in this catalog.
 Specifications subject to change without notice.

COMPLETE SEAL KITS	
TYPE	PART NO.
Buna-N	32A50-G40T-NST
Viton	32A50-G40T-ETT
EPR	32A50-G40T-HTT

See Data Sheets for breakdown of parts.

5.2A50 Accumulators 5,000 PSI (345 Bar)

MODEL NUMBER	GAS CAPACITY		FLUID CAPACITY		DRY WEIGHT		DIMENSION			
	In. ³	Cm. ³	Gallon	Liters	Lbs.	Kg.	A		B	
							In.	mm.	In.	mm.
5.2A50-2	64	1,055	0.25	1	48	22	5.25	133	13.13	333
5.2A50-4	121	1,983	0.5	2	58	26	5.25	133	17.38	441
5.2A50-6	186	3,048	0.75	3	70	32	5.25	133	22.25	565
5.2A50-8	236	3,868	1	4	78	36	5.25	133	26	660
5.2A50-12	353	5,779	1.5	6	99	45	5.25	133	34.75	883
5.2A5016	468	7,663	2	7	119	54	5.25	133	43.38	1,102
5.2A50-20	583	9,548	2.5	9	139	63	5.25	133	52	1,321
5.2A50-24	698	11,432	3	11	160	72	5.25	133	60.63	1,540



GENERAL DESIGN DATA

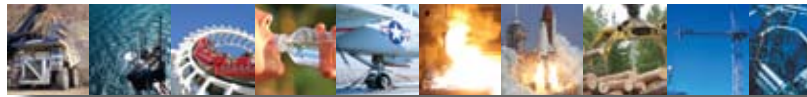
Maximum Working Pressure 5,000 PSI (345 Bar)
 Maximum Proof Pressure 7,500 PSI (517 Bar)
 Operating Temperature (Buna/Nitrile) -20° to +200°F (-28° to 93°C)
 Fluid Port Size SAE 16
 (Note: Optional fluid port sizes and styles available)

Standard seal material for petroleum base oil.
 Seals available for other fluids.
 ASME code stamp is not available as a standard.

ASME and other certification requirements may entail changes in materials, strengths, dimensional specifications and design parameters from those illustrated in this catalog.
 Specifications subject to change without notice.

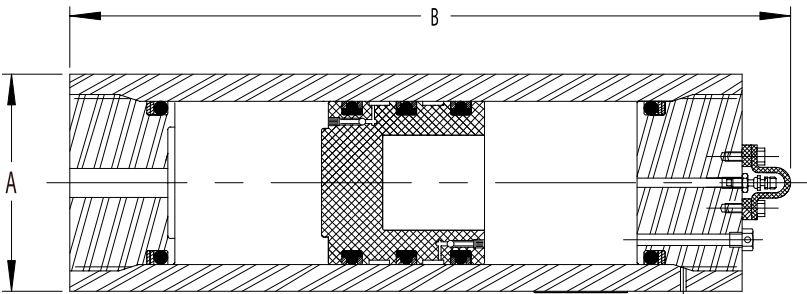
COMPLETE SEAL KITS	
TYPE	PART NO.
Buna-N	52A50-G40T-NST
Viton	52A50-G40T-ETT
EPR	52A50-G40T-HTT

See Data Sheets for breakdown of parts.



9A50 Accumulators 5,000 PSI (345 Bar)

MODEL NUMBER	GAS CAPACITY		FLUID CAPACITY		DRY WEIGHT		DIMENSION			
	In. ³	Cm. ³	Gallon	Liters	Lbs.	Kg.	A		B	
9A50-20	607	9,951	2.5	9	250	113	9	229	27	679
9A50-40	1,183	19,385	5	19	348	158	9	229	41	1,048
9A50-60	1,759	28,819	7.5	28	446	202	9	229	56	1,416
9A50-80	2,334	38,253	10	37	544	247	9	229	70	1,784
9A50-100	2,910	47,687	12.5	47	643	292	9	229	85	2,153
9A50-120	3,486	57,121	15	56	741	336	9	229	99	2,521
9A50-140	4,061	66,555	17.5	66	839	381	9	229	114	2,889
9A50-160	4,637	75,989	20	75	937	425	9	229	128	3,258
9A50-200	5,793	94,938	25	94	1,134	514	9	229	157	3,997
9A50-240	6,945	113,806	30	113	1,330	603	9	229	186	4,734
9A50-320	9,238	151,379	40	151	1,724	782	9	229	245	6,210



GENERAL DESIGN DATA

Maximum Working Pressure 5,000 PSI (345 Bar)
 Maximum Proof Pressure 7,500 PSI (517 Bar)
 Operating Temperature (Buna/Nitrile) -20° to +200°F (-28° to 93°C)
 Fluid Port Size SAE 2" 4-Bolt Code 62
 (Note: Optional fluid port sizes and styles available)

Standard seal material for petroleum base oil.
 Seals available for other fluids.

ASME and other certification requirements may entail changes in materials, strengths, dimensional specifications and design parameters from those illustrated in this catalog.

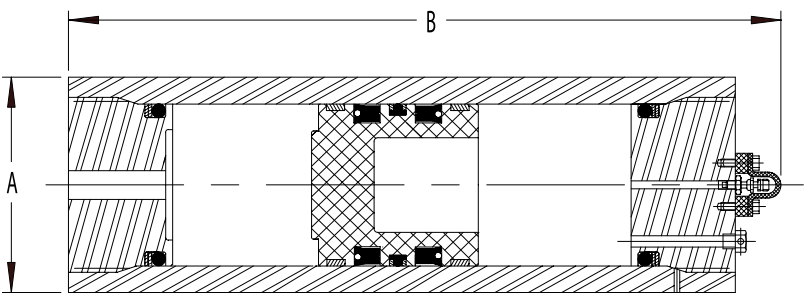
Specifications subject to change without notice.

COMPLETE SEAL KITS	
TYPE	PART NO.
Buna-N	9A50-G40T-NST
Viton	9A50-G40T-ETT
EPR	9A50-G40T-HTT

See Data Sheets for breakdown of parts.

16A50 Accumulators 5,000 PSI (345 Bar)

MODEL NUMBER	GAS CAPACITY		FLUID CAPACITY		DRY WEIGHT		DIMENSION			
	In. ³	Cm. ³	Gallon	Liters	Lbs.	Kg.	A		B	
16A50-120	3,631	59,508	15	57	1,619	734	16	40	49.63	1,260
16A50-140	4,777	78,273	20	76	1,871	849	16	40	59.75	1,518
16A50-200	5,936	97,270	25	95	2,126	964	16	40	70	1,778
16A50-240	7,095	116,266	30	114	2,381	1,080	16	40	80.25	2,038
16A50-320	9,399	154,028	40	151	2,889	1,310	16	40	100.63	2,556
16A50-400	11,704	191,789	50	189	3,396	1,540	16	40	121	3,073
16A50-480	14,051	230,246	60	228	3,912	1,775	16	40	141.75	3,600
16A50-560	16,312	267,312	70	265	4,410	2,000	16	40	161.75	4,108
16A50-640	18,645	305,537	80	303	4,924	2,233	16	40	182.38	4,632
16A50-720	20,949	343,298	90	341	5,431	2,463	16	40	202.38	5,150
16A50-800	23,268	381,292	100	379	5,941	2,695	16	40	223.25	5,671



GENERAL DESIGN DATA

Maximum Working Pressure 5,000 PSI (345 Bar)
 Maximum Proof Pressure 7,500 PSI (517 Bar)
 Operating Temperature (Buna/Nitrile) -20° to +200°F (-28° to 93°C)
 Fluid Port Size SAE 2" 4-Bolt Code 62
 (Note: Optional fluid port sizes and styles available)

Standard seal material for petroleum base oil.
 Seals available for other fluids.

ASME and other certification requirements may entail changes in materials, strengths, dimensional specifications and design parameters from those illustrated in this catalog.

Specifications subject to change without notice.

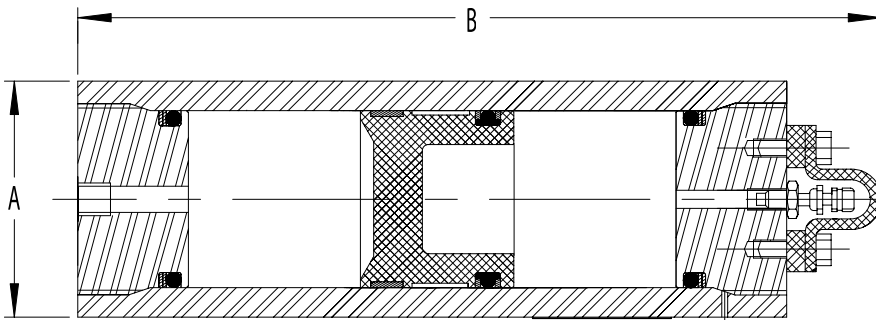
COMPLETE SEAL KITS	
TYPE	PART NO.
Buna-N	16A50-G40P-NST
Viton	16A50-G40P-ETT
EPR	16A50-G40P-HTT

See Data Sheets for breakdown of parts.

10,000 PSI Series

4AT100 Accumulators 10,000 PSI (690 Bar)

MODEL NUMBER	GAS CAPACITY		FLUID CAPACITY		DRY WEIGHT		DIMENSION			
	In. ³	Cm. ³	Gallon	Liters	Lbs.	Kg.	A		B	
							In.	mm.	In.	mm.
4AT100-5	15	251	0.5	0.25	25	11	4	102	10.38	264
4AT100-1	30	493	0.125	0.49	32	14	4	102	13.38	340
4AT100-2	60	675	0.25	1.00	45	20	4	102	19.38	492
4AT100-4	117	1910	0.5	2.00	70	32	4	102	31	787



GENERAL DESIGN DATA

Maximum Working Pressure 10,000 PSI (690 Bar)
 Maximum Proof Pressure 15,000 PSI (1,034 Bar)
 Operating Temperature (Buna/Nitrile) -20° to +200°F (-28° to 93°C)
 Fluid Port Size 1/2" NPT (Note: Optional MP -Medium & HP-High Pressure Porting available)

Standard seal material for petroleum base oil.
 Seals available for other fluids.

ASME and other certification requirements may entail changes in materials, strengths, dimensional specifications and design parameters from those illustrated in this catalog.

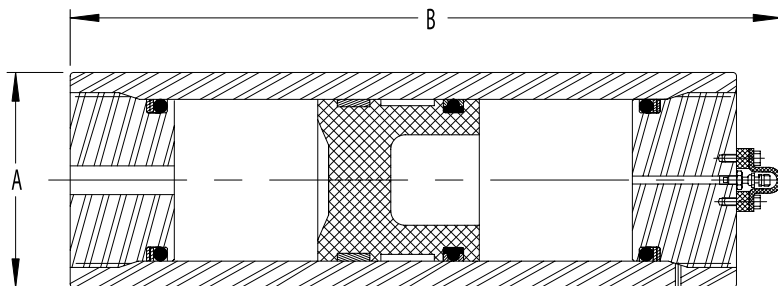
Specifications subject to change without notice.

COMPLETE SEAL KITS	
TYPE	PART NO.
Buna-N	4AT100-G40T-NST
Viton	4AT100-G40T-ETT
EPR	4AT100-G40T-HTT

See Data Sheets for breakdown of parts.

8.5A100 Accumulators 10,000 PSI (690 Bar)

MODEL NUMBER	GAS CAPACITY		FLUID CAPACITY		DRY WEIGHT		DIMENSION			
	In. ³	Cm. ³	Gallon	Liters	Lbs.	Kg.	A		B	
							In.	mm.	In.	mm.
8.5A100-8	244	3,992	1	4	243	110	8.5	216	22	559
8.5A100-12	361	5,914	1.5	6	275	125	8.5	216	26	660
8.5A100-16	478	7825	2	8	308	140	8.5	216	30.13	765
8.5A100-20	591	9,678	2.5	9	340	154	8.5	216	34.13	867
8.5A100-24	711	11,647	3	11	375	170	8.5	216	38.38	975
8.5A100-32	941	15,412	4	15	440	200	8.5	216	46.50	1,181
8.5A100-40	1,177	19,292	5	19	508	230	8.5	216	54.88	1,394
8.5A100-60	1,760	28,849	7.5	29	674	306	8.5	216	75.50	1,918
8.5A100-80	2,326	38,115	10	38	835	379	8.5	216	95.50	2,426
8.5A100-120	3,482	57,054	15	57	1,164	528	8.5	216	136.38	3,464
8.5A100-160	4,637	75,993	20	76	1,494	677	8.5	216	177.25	4,502



GENERAL DESIGN DATA

Maximum Working Pressure 10,000 PSI (690 Bar)
 Maximum Proof Pressure 15,000 PSI (1,034 Bar)
 Operating Temperature (Buna/Nitrile) -20° to +200°F (-28° to 93°C)
 Fluid Port Size 1/2" NPT (Note: Optional MP -Medium & HP-High Pressure Porting available)

Standard seal material for petroleum base oil.
 Seals available for other fluids.

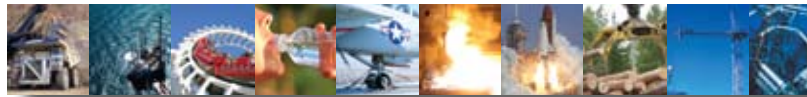
ASME code stamp is not available as a standard.

ASME and other certification requirements may entail changes in materials, strengths, dimensional specifications and design parameters from those illustrated in this catalog.

Specifications subject to change without notice.

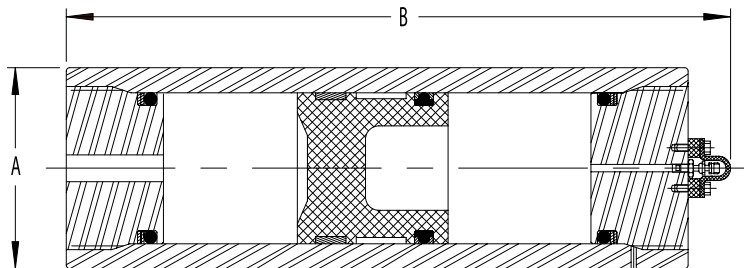
COMPLETE SEAL KITS	
TYPE	PART NO.
Buna-N	8.5A100-G40T-NST
Viton	8.5A100-G40T-ETT
EPR	8.5A100-G40T-HTT

See Data Sheets for breakdown of parts.



11A100 Accumulators 10,000 PSI (690 Bar)

MODEL NUMBER	GAS CAPACITY		FLUID CAPACITY		DRY WEIGHT		DIMENSION			
	In. ³	Cm. ³	Gallon	Liters	Lbs.	Kg.	A		B	
							In.	mm.	In.	mm.
11A100-8	246	4,025	1	4	478	217	11	279	22.50	572
11A100-12	362	5,932	1.5	6	577	262	11	279	27.38	695
11A100-16	478	7,830	2	8	675	306	11	279	32.25	819
11A100-20	594	9,728	2.5	9	773	351	11	279	37.13	943
11A100-24	709	11,626	3	11	872	395	11	279	42	1,067
11A100-32	941	15,413	4	15	1,068	485	11	279	51.75	1,314
11A100-40	1,172	19,209	5	19	1,265	574	11	279	61.50	1,562
11A100-60	1,748	28,650	7.5	28	1,754	796	11	279	85.75	2,178
11A100-80	2,327	38,140	10	38	2,246	1,019	11	279	110.13	2,797
11A100-120	3,483	57,071	15	57	3,227	1,464	11	279	158.75	4,032
11A100-160	4,638	76,002	20	76	4,207	1,908	11	279	207.38	5,267



GENERAL DESIGN DATA

Maximum Working Pressure 10,000 PSI (690 Bar)

Maximum Proof Pressure 15,000 PSI (1,034 Bar)

Operating Temperature
(Buna/Nitrile) +52° to +200°F (+11° to 93°C)

Fluid Port Size 1/2" NPT (Note: Optional MP
-Medium & HP-High Pressure Porting available)

Standard seal material for petroleum base oil.

Seals available for other fluids.

ASME and other certification requirements may entail changes in materials, strengths, dimensional specifications and design parameters from those illustrated in this catalog.

Specifications subject to change without notice.

COMPLETE SEAL KITS	
TYPE	PART NO.
Buna-N	11A100-G55-NST
Viton	11A100-G55-ETT
EPR	11A100-G55-HTT

See Data Sheets for breakdown of parts.