

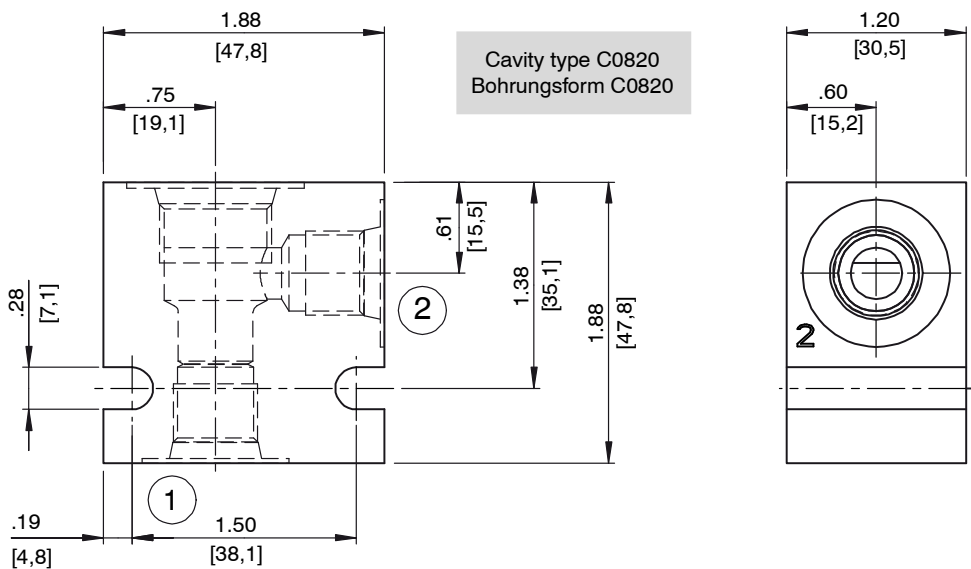
Line-Mounting Body, Size 8

Type: 8 Series - 2-Way

1 Technical data

Ordering code	Description	Material	Maximum operating pressure	Weight	Port 1	Port 2
02BA	30401	Aluminium	3000 psi [210 bar]	.328 lbs [0.15 kg]	G ¼" -19 BSPP	G ¼" -19 BSPP
02BS	30413	Steel	5000 psi [350 bar]	.956 lbs [0.45 kg]	G ¼" -19 BSPP	G ¼" -19 BSPP
06TA	30402	Aluminium	3000 psi [210 bar]	.320 lbs [0.15 kg]	SAE-6	SAE-6
06TS	30414	Steel	5000 psi [350 bar]	.932 lbs [0.40 kg]	SAE-6	SAE-6

2 Dimensions & sectional view



3 Related data sheets

Reference	(Old no.)	Description
520-P-000110	(0-011.0)	Cavity type C0820

info.el@bucherhydraulics.com

www.bucherhydraulics.com/commoncavity

© 2015 by Bucher Hydraulics, Inc., 2545 Northwest Parkway, Elgin, Illinois 60124, USA

All rights reserved.

Data is provided for the purpose of product description only, and must not be construed as warranted characteristics in the legal sense. The information does not relieve users from the duty of conducting their own evaluations and tests. Because the products are subject to continual improvement, we reserve the right to amend the product specifications contained in this catalogue.

Classification: 430.395.-.-.-.

Reference: 520-P-000111-EN-01