

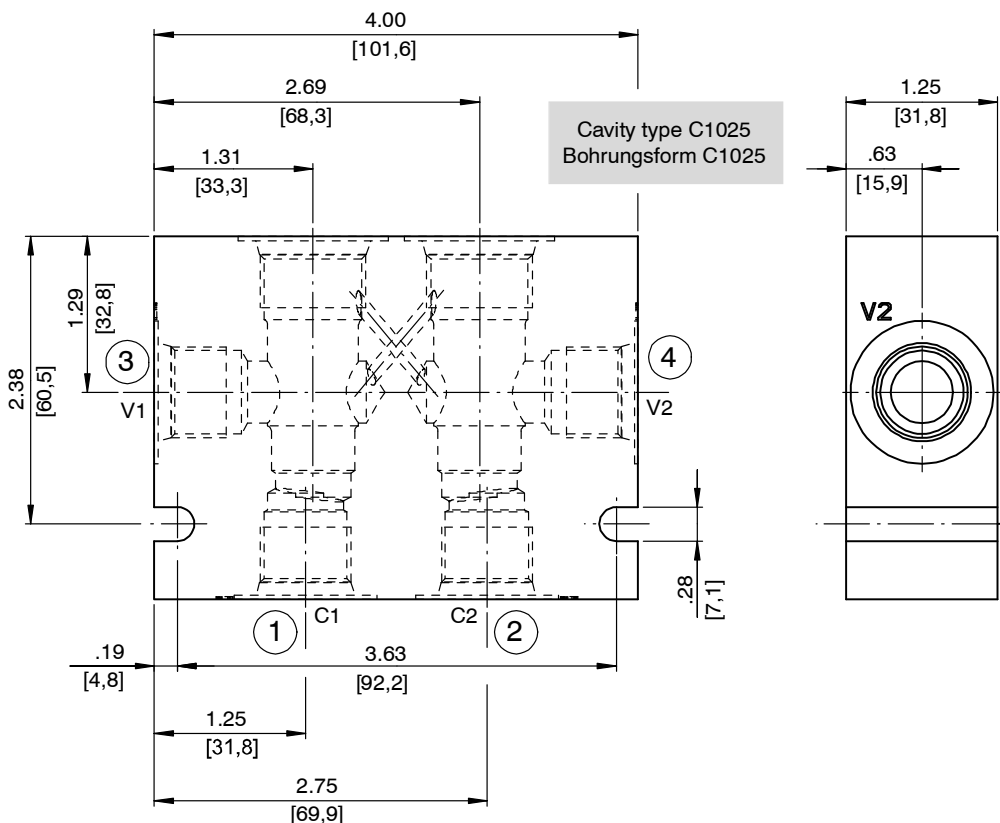
# Line-Mounting Body, Size 10

Type: 10 Series - 2.5-Way - Dual Design

## 1 Technical data

Ordering code	Description	Material	Maximum operating pressure	Weight	Port 1	Port 2	Port 3	Port 4
03BA	30302	Aluminum	3000 psi [210 bar]	1.144 lbs [0.52 kg]	G 3/8" -19 BSPP	G 3/8" -19 BSPP	G 3/8" -19 BSPP	G 3/8" -19 BSPP
03BS	30308	Steel	5000 psi [350 bar]	3.334 lbs [1.51 kg]	G 3/8" -19 BSPP	G 3/8" -19 BSPP	G 3/8" -19 BSPP	G 3/8" -19 BSPP
04BA	30303	Aluminum	3000 psi [210 bar]	1.090 lbs [0.49 kg]	G 1/2" -14 BSPP	G 1/2" -14 BSPP	G 1/2" -14 BSPP	G 1/2" -14 BSPP
04BS	30309	Steel	5000 psi [350 bar]	3.175 lbs [1.44 kg]	G 1/2" -14 BSPP	G 1/2" -14 BSPP	G 1/2" -14 BSPP	G 1/2" -14 BSPP
08TA	30304	Aluminum	3000 psi [210 bar]	1.104 lbs [0.50 kg]	SAE-8	SAE-8	SAE-8	SAE-8
08TS	30310	Steel	5000 psi [350 bar]	3.216 lbs [1.46 kg]	SAE-8	SAE-8	SAE-8	SAE-8
10TA	30305	Aluminum	3000 psi [210 bar]	1.050 lbs [0.48 kg]	SAE-10	SAE-10	SAE-10	SAE-10
10TS	30311	Steel	5000 psi [350 bar]	3.058 lbs [1.39 kg]	SAE-10	SAE-10	SAE-10	SAE-10

## 2 Dimensions & sectional view



### 3 Related data sheets

Reference	(Old no.)	Description
520-P-000220	(0-022.0)	Cavity type C1025

[info.el@bucherhydraulics.com](mailto:info.el@bucherhydraulics.com)

[www.bucherhydraulics.com/commoncavity](http://www.bucherhydraulics.com/commoncavity)

© 2015 by Bucher Hydraulics, Inc., 2545 Northwest Parkway, Elgin, Illinois 60124, USA

All rights reserved.

Data is provided for the purpose of product description only, and must not be construed as warranted characteristics in the legal sense. The information does not relieve users from the duty of conducting their own evaluations and tests. Because the products are subject to continual improvement, we reserve the right to amend the product specifications contained in this catalogue.

Classification: 430.395.-.-.-.