

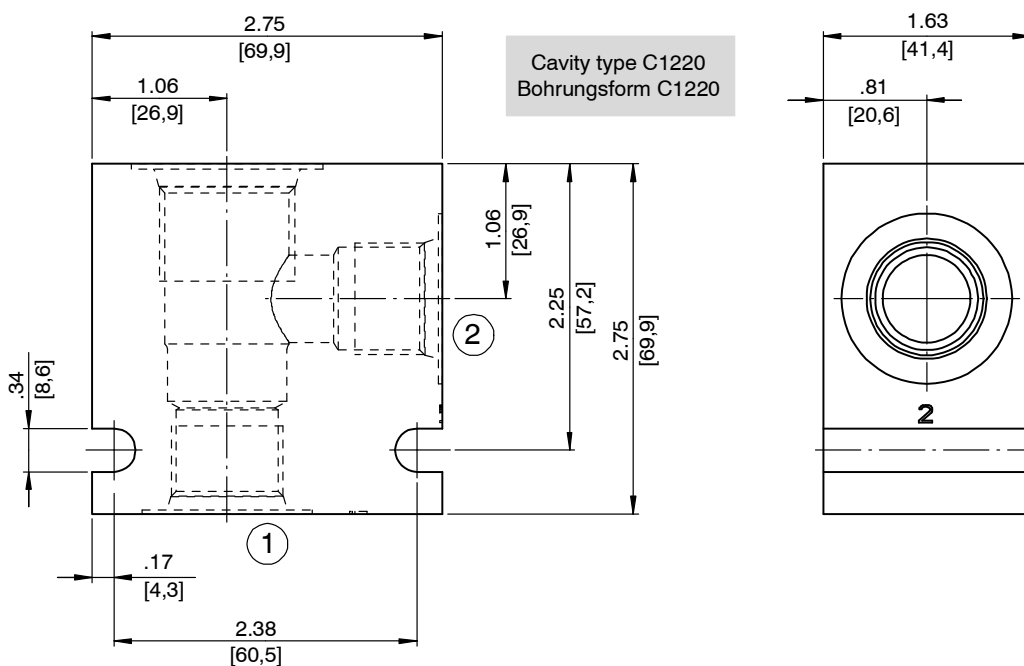
# Line-Mounting Body, Size 12

Type: 12 Series - 2-Way

## 1 Technical data

Ordering code	Description	Material	Maximum operating pressure	Weight	Port 1	Port 2	Port 3
04BA	30094	Aluminum	3000 psi [210 bar]	0.937 lbs [0.43 kg]	G 1/2" -14 BSPP	G 1/2" -14 BSPP	G 1/2" -14 BSPP
04BS	30100	Steel	5000 psi [350 bar]	2.731 lbs [1.24 kg]	G 1/2" -14 BSPP	G 1/2" -14 BSPP	G 1/2" -14 BSPP
06BA	30095	Aluminum	3000 psi [210 bar]	0.884 lbs [0.40 kg]	G 3/4" -14 BSPP	G 3/4" -14 BSPP	G 3/4" -14 BSPP
06BS	30101	Steel	5000 psi [350 bar]	2.576 lbs [1.17 kg]	G 3/4" -14 BSPP	G 3/4" -14 BSPP	G 3/4" -14 BSPP
10TA	30096	Aluminum	3000 psi [210 bar]	0.917 lbs [0.42 kg]	SAE-10	SAE-10	SAE-10
10TS	30102	Steel	5000 psi [350 bar]	2.672 lbs [1.21 kg]	SAE-10	SAE-10	SAE-10
12TA	30097	Aluminum	3000 psi [210 bar]	0.865 lbs [0.39 kg]	SAE-12	SAE-12	SAE-12
12TS	30103	Steel	5000 psi [350 bar]	2.521 lbs [1.14 kg]	SAE-12	SAE-12	SAE-12

## 2 Dimensions & sectional view



### 3 Related data sheets

Reference	(Old no.)	Description
520-P-000130	(0-013.0)	Cavity type C1220

[info.el@bucherhydraulics.com](mailto:info.el@bucherhydraulics.com)

[www.bucherhydraulics.com/commoncavity](http://www.bucherhydraulics.com/commoncavity)

© 2015 by Bucher Hydraulics, Inc., 2545 Northwest Parkway, Elgin, Illinois 60124, USA

All rights reserved.

Data is provided for the purpose of product description only, and must not be construed as warranted characteristics in the legal sense. The information does not relieve users from the duty of conducting their own evaluations and tests. Because the products are subject to continual improvement, we reserve the right to amend the product specifications contained in this catalogue.

Classification: 430.395.-.-.-.