

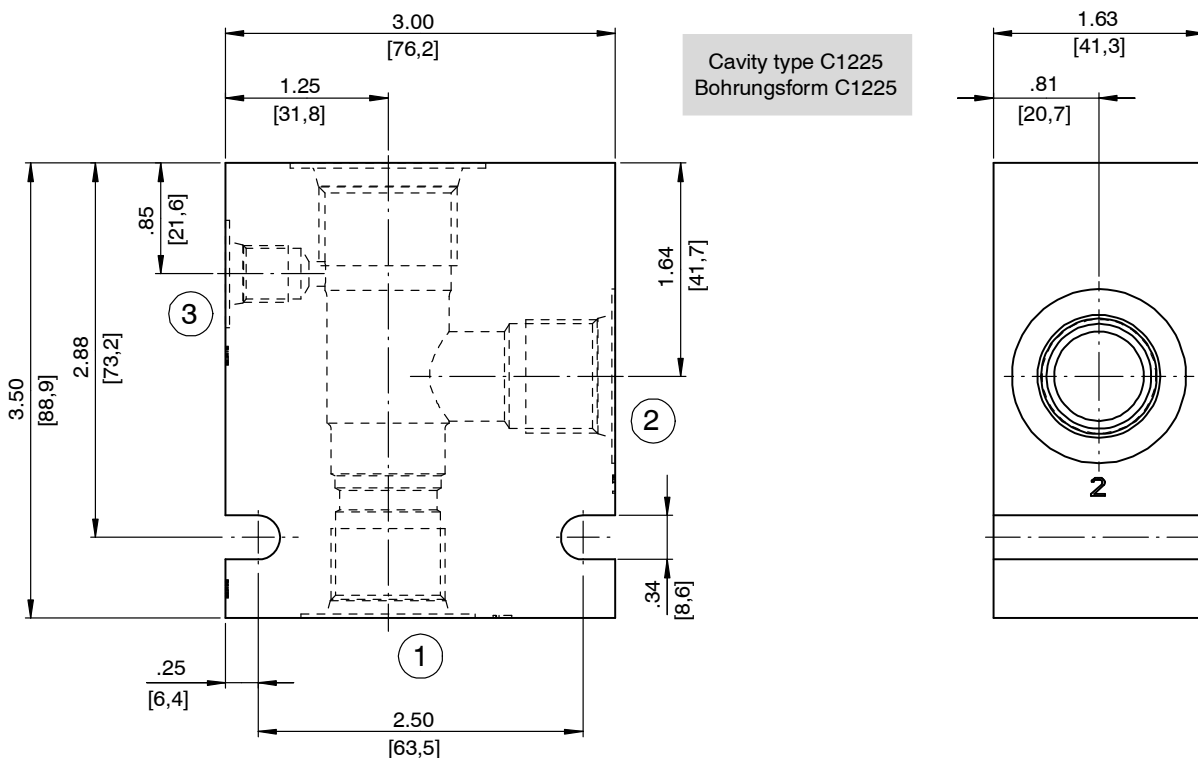
# Line-Mounting Body, Size 12

Type: 12 Series - 2.5-Way

## 1 Technical data

Ordering code	Description	Material	Maximum operating pressure	Weight	Port 1	Port 2	Port 3
04BA	30323	Aluminum	3000 psi [210 bar]	1.336 lbs [0.61 kg]	G 1/2" -14 BSPP	G 1/2" -14 BSPP	G 1/4" -19 BSPP
04BS	30329	Steel	5000 psi [350 bar]	3.892 lbs [1.77 kg]	G 1/2" -14 BSPP	G 1/2" -14 BSPP	G 1/4" -19 BSPP
06BA	30324	Aluminum	3000 psi [210 bar]	1.281 lbs [0.58 kg]	G 3/4" -14 BSPP	G 3/4" -14 BSPP	G 1/4" -19 BSPP
06BS	30330	Steel	5000 psi [350 bar]	3.733 lbs [1.69 kg]	G 3/4" -14 BSPP	G 3/4" -14 BSPP	G 1/4" -19 BSPP
10TA	30325	Aluminum	3000 psi [210 bar]	1.320 lbs [0.60 kg]	SAE-10	SAE-10	SAE-4
10TS	30331	Steel	5000 psi [350 bar]	3.846 lbs [1.75 kg]	SAE-10	SAE-10	SAE-4
12TA	30326	Aluminum	3000 psi [210 bar]	1.265 lbs [0.57 kg]	SAE-12	SAE-12	SAE-4
12TS	30332	Steel	5000 psi [350 bar]	3.686 lbs [1.67 kg]	SAE-12	SAE-12	SAE-4

## 2 Dimensions & sectional view



### 3 Related data sheets

Reference	(Old no.)	Description
520-P-000230	(0-023.0)	Cavity type C1225

[info.el@bucherhydraulics.com](mailto:info.el@bucherhydraulics.com)

[www.bucherhydraulics.com/commoncavity](http://www.bucherhydraulics.com/commoncavity)

© 2015 by Bucher Hydraulics, Inc., 2545 Northwest Parkway, Elgin, Illinois 60124, USA

All rights reserved.

Data is provided for the purpose of product description only, and must not be construed as warranted characteristics in the legal sense. The information does not relieve users from the duty of conducting their own evaluations and tests. Because the products are subject to continual improvement, we reserve the right to amend the product specifications contained in this catalogue.

Classification: 430.395.-.-.-.