

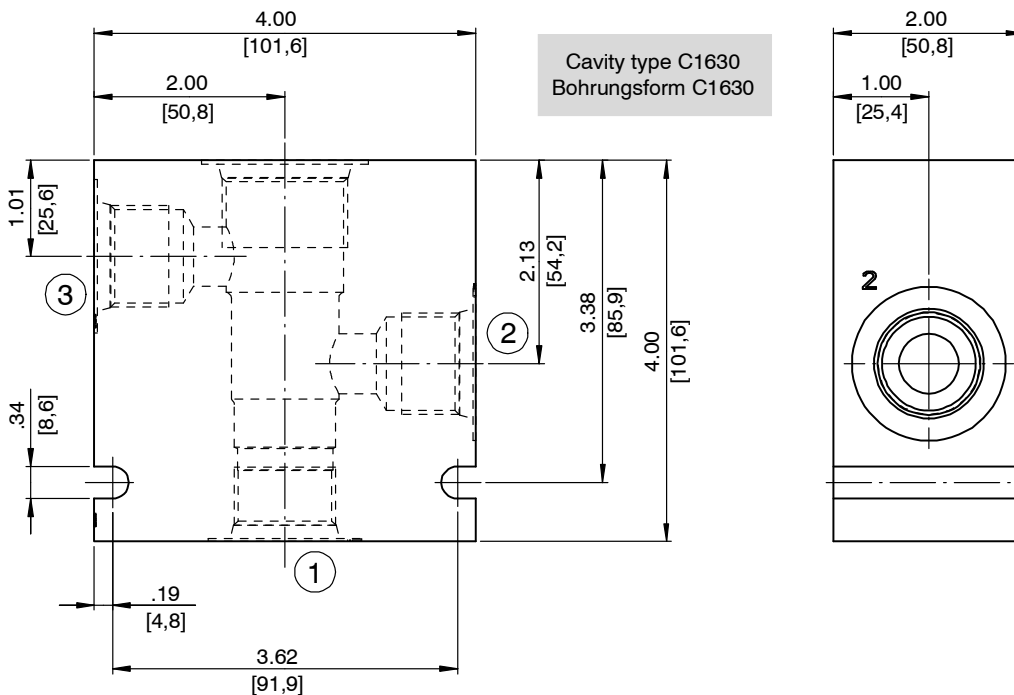
# Line-Mounting Body, Size 16

Type: 16 Series - 3-Way

## 1 Technical data

Ordering code	Description	Material	Maximum operating pressure	Weight	Port 1	Port 2	Port 3
06BA	30206	Aluminum	3000 psi [210 bar]	2.502 lbs [1.13 kg]	G 3/4" -14 BSPP	G 3/4" -14 BSPP	G 3/4" -14 BSPP
06BS	30212	Steel	5000 psi [350 bar]	7.289 lbs [3.31 kg]	G 3/4" -14 BSPP	G 3/4" -14 BSPP	G 3/4" -14 BSPP
08BA	30207	Aluminum	3000 psi [210 bar]	2.361 lbs [1.07 kg]	G 1" -11 BSPP	G 1" -11 BSPP	G 1" -11 BSPP
08BS	30213	Steel	5000 psi [350 bar]	6.878 lbs [3.12 kg]	G 1" -11 BSPP	G 1" -11 BSPP	G 1" -11 BSPP
12TA	30208	Aluminum	3000 psi [210 bar]	2.487 lbs [1.13 kg]	SAE-12	SAE-12	SAE-12
12TS	30214	Steel	5000 psi [350 bar]	7.244 lbs [3.29 kg]	SAE-12	SAE-12	SAE-12
16TA	30209	Aluminum	3000 psi [210 bar]	2.342 lbs [1.06 kg]	SAE-16	SAE-16	SAE-16
16TS	30215	Steel	5000 psi [350 bar]	6.822 lbs [3.09 kg]	SAE-16	SAE-16	SAE-16

## 2 Dimensions & sectional view



### 3 Related data sheets

Reference	(Old no.)	Description
520-P-000340	(0-034.0)	Cavity type C1630

[info.el@bucherhydraulics.com](mailto:info.el@bucherhydraulics.com)

[www.bucherhydraulics.com/commoncavity](http://www.bucherhydraulics.com/commoncavity)

© 2015 by Bucher Hydraulics, Inc., 2545 Northwest Parkway, Elgin, Illinois 60124, USA

All rights reserved.

Data is provided for the purpose of product description only, and must not be construed as warranted characteristics in the legal sense. The information does not relieve users from the duty of conducting their own evaluations and tests. Because the products are subject to continual improvement, we reserve the right to amend the product specifications contained in this catalogue.

Classification: 430.395.-.-.-.