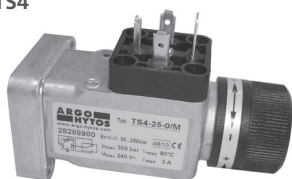


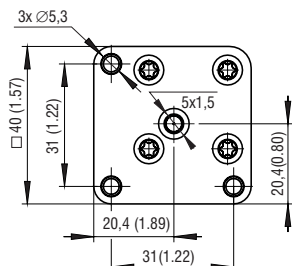
TS4, MTS

Size 06 (D03), 10 (D05) • p_{max} 350 bar (5100 PSI)

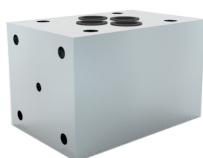
TS4



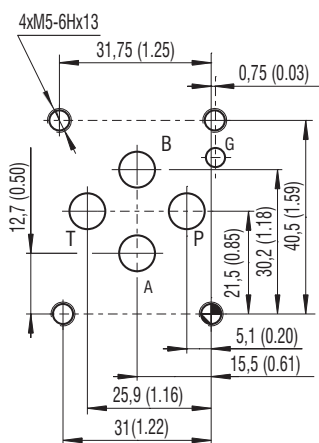
ISO 16873



MTS

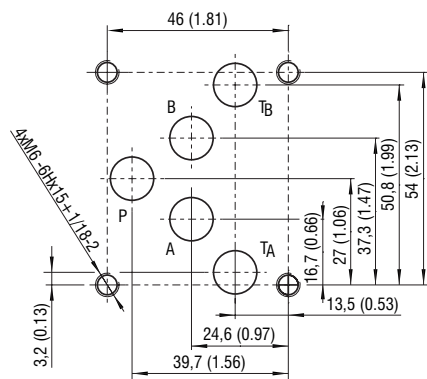


ISO 4401-03-02-0-05 (CETOP 03)



Ports P, A, B, T max. \varnothing 7.5 mm (0.29 in)

ISO 4401-05-04-0-05 (CETOP 05)



Ports P, A, B, T max. \varnothing 11.2 mm (0.44 in)

Technical Features

- › Proven design in stationary and mobile hydraulic applications
- › Rugged construction, vibration- and shock-proof, long-term stability
- › Wide setpoint pressure range
- › Available in a wide range of configurations
- › Precise setpoint adjustment
- › Factory preset or field adjustable
- › Modular concept and manifold mount
- › AC and DC power supply options
- › Fluid connection: G1/4 and vertical flange acc. to ISO 16873
- › Subplate mounting interface acc. to ISO 4401, DIN 24340 (CETOP 03 and 05)

Functional Description

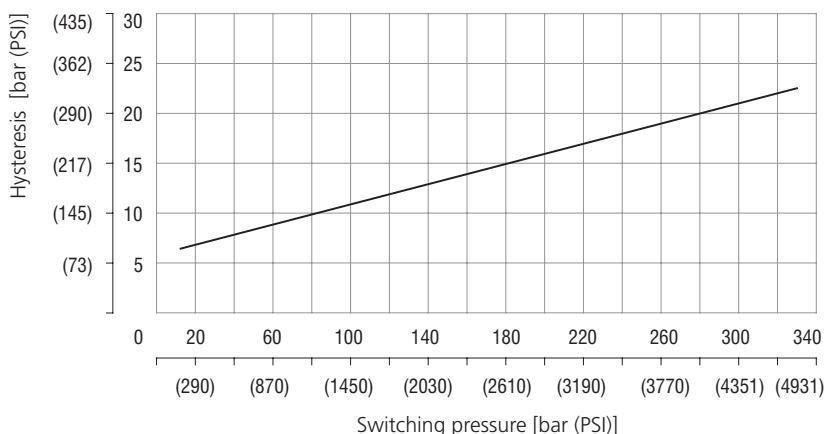
The TS pressure switch converts hydraulic signals into electrical signals. The switching point is continuously adjustable within the operating pressure range by an easy to handle adjusting knob. The adjusted switching point can be locked into position. The built-in micro switch can be used as an opener, a closer, or a changer depending on the particular wiring. The pressure switch is intended for use under normal industrial conditions in technical equipment and machines with a maximum system pressure up to 350 bar. The switches are supplied with a flange (ISO 16873) and three M5 screws, or with a versatile screwed connection. Together with the MTS vertical grouping plate of Size 06 or Size 10 the pressure switch may be flanged laterally to pick-up the pressure signal in one of the channels (A,B,P). The switch can be mounted at 90° rotational increments, providing additional flexibility during installation. Optional: socket with or without LED available (see accessories).

Technical Data

Sensor element	piston			
Process connection (male)	Revolving nipple with internal thread G1/4, vertical flange ISO 16873			
Max. operating pressure	bar (PSI)	350 (5080)		
Measuring ranges (adjustable)	bar	10...80	10...160	20...250
	(PSI)	(145...1160)	(145...2320)	(290...3630) (435...4640)
Operating fluids	self-lubricating fluids like:hydraulic oils of power classes (HL, HLP) to DIN 51524, grease, light heating oil			
Viscosity range	mm ² .s ⁻¹	20 ... 100 (allowable range 12 ... 500)		
Switching frequency	min ⁻¹	100		
Repeatability of maximum operating range	%	±2		
Max. fluid temperature	°C (°F)	+80 (+176)		
Ambient temperature	°C (°F)	-10 ... +80 (14 ... +176)		
Service life	cycles	> 6 mil.switchings		
Material	housing	zinc die-cast		
	adjusting knob	aluminum, coated		
	seals	Dynamic: PTFE, Static: NBR		
Mass	kg (lb)	0.33 (0.72)		
Vibration resistance g	m.s ⁻²	10 g (10 ... 2000 Hz)		
Shock resistance g	m.s ⁻²	30		
Electrical data				
Electrical connection	acc. to EN 175301-803, Type A			
Power supply	EN 60947	AC 12	4 A	250 V AC
		AC 14	1 A	250 V AC
		DC 12	3 A	28 V DC
		DC 14	1 A	28 V DC
Enclosure acc. to EN 60529	IP65			

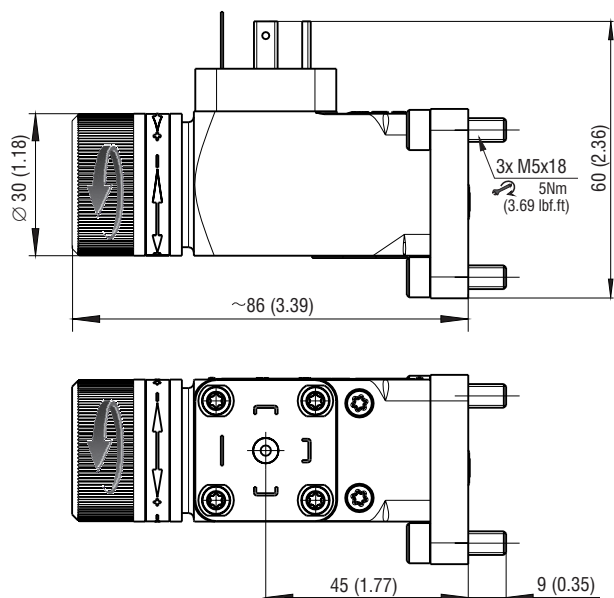
Characteristics measured at $v = 32 \text{ mm}^2/\text{s}$ (156 SUS)

Differential Reset

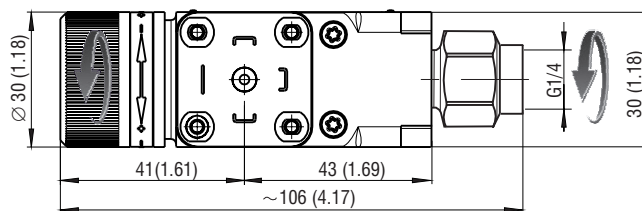


Dimensions in millimeters (inches)

Type TS4-xx-0 (with flange DIN ISO 16873)

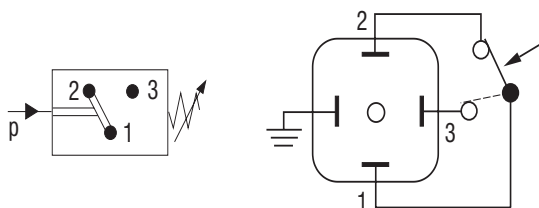


Type TS4-xx-1



Revolving nipple with internal thread G1/4.

Electrical Connection



Switching functions:

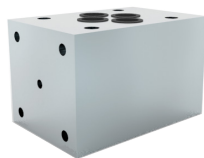
with increasing pressure the change-over switch opens the connection 1 – 2 and closes the circuit between 1 – 3

Ordering Code

TS4 - [] - []		
Pressure switch, mechanical		
Pressure ranges		
10...80 bar (145...1160 PSI)	08	
10...160 bar (145...2321 PSI)	16	
20...250 bar (290...3626 PSI)	25	
30...320 bar (435...4641 PSI)	32	
		0
		1
		Process connection
		with flange ISO 16873
		with internal thread G1/4

MTS

Size 06 (D03), 10 (D05) • p_{max} 350 bar (5100 PSI)

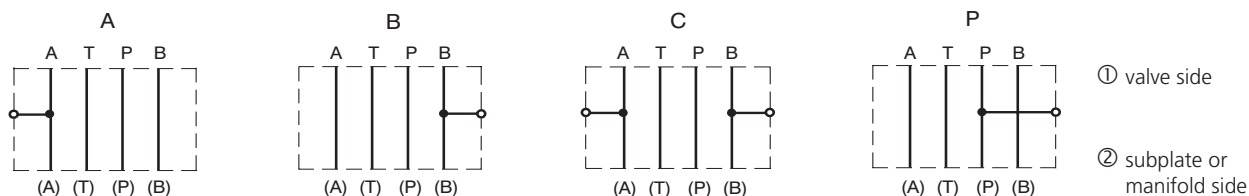


Technical Features

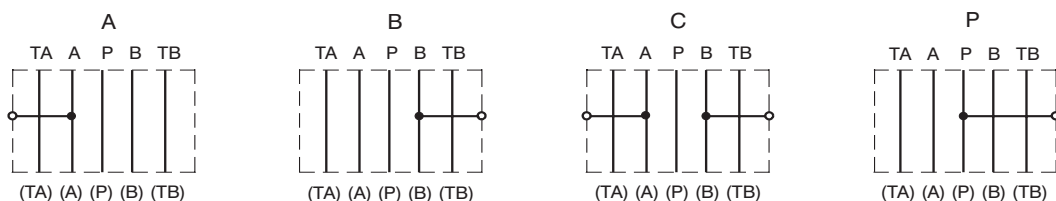
- › Subplate interface acc. to ISO 4401, DIN 24340 (CETOP 03 and 05)
- › Sandwich plate design for use in vertical stacking assemblies
- › In the standard version, the valve housing is phosphated and steel parts are zinc-coated for 240 h protection acc. to ISO 9227

Functional Symbols

MTS sandwich plates size 06



MTS sandwich plates size 10



Ordering Code

MTS - / -

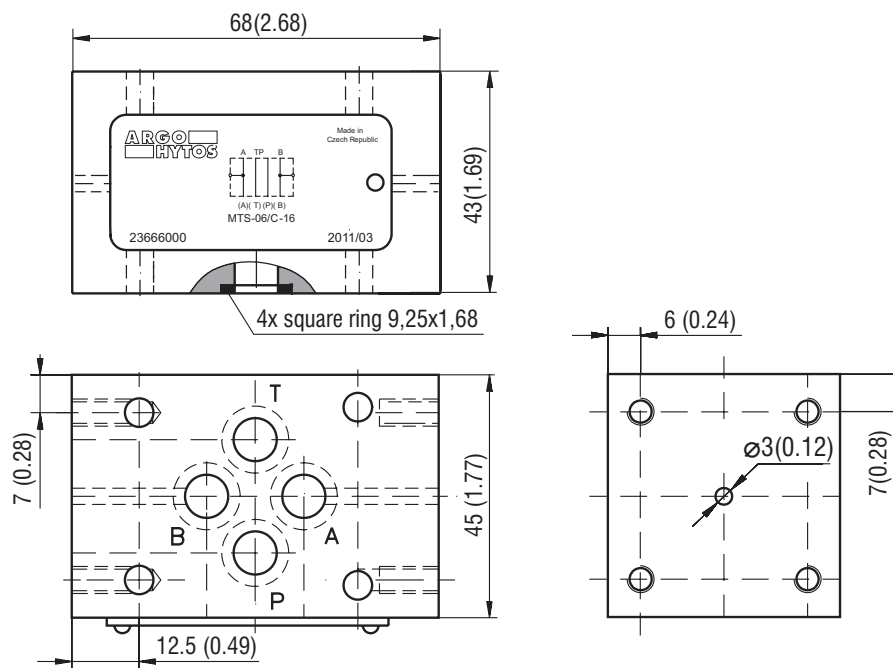
<p>Pressure switch, mechanical</p>		<p>No designation A zinc-coated (ZnCr-3), ISO 9227 (240 h) B zinc-coated (ZnNi), ISO 9227 (520 h)</p>
<p>Nominal size ISO 4401-03-02-0-05, DIN 24340 (CETOP 03), size 06 06 ISO 4401-05-04-0-05, DIN 24340 (CETOP 05), size 10 10</p>	<p>A B C P</p>	<p>Surface treatment phosphated body</p> <p>Functional symbol connection in port A connection in port B connection in port A and B connection in port P</p>

Accessories

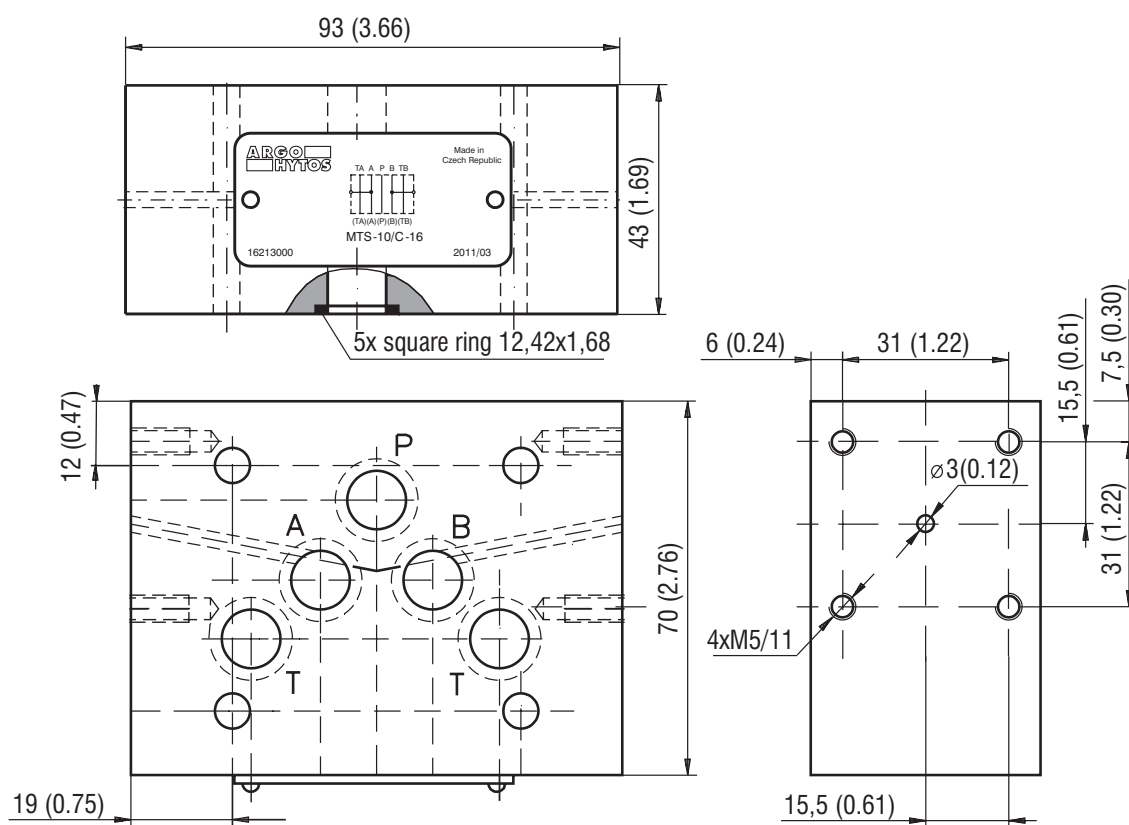
Connectors EN 175301-803-A			
Type	Solenoid connections	Ordering number	
Connector	Standard	28787900	

Sandwich Plate Dimensions in millimeters (inches)

MTS-06/C



MTS-10/C



The pressure switch can be rotated by 90° steps around the longitudinal axis.