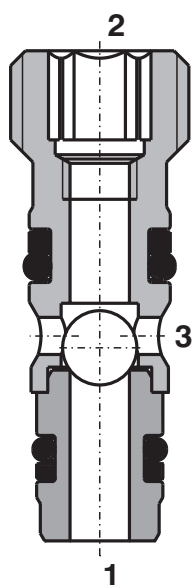


Load Shuttle Valve Rubber Sealed Ports

LV2-043

M12x1,5 • Q_{max} 8 l/min (2 GPM) • p_{max} 500 bar (7300 PSI)

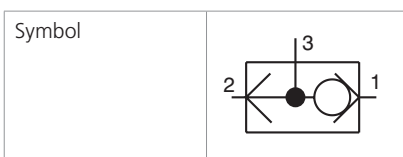


Technical Features

- › Hardened and precision working parts
- › Leak-free in closed position
- › Fast response to load direction changes
- › Compact size with small installation space

Functional Description

A high pressure shuttle, screw-in, cartridge valve. Used for blocking or opening hydraulic circuits to define priority of flow/direction given by higher pressure circuit over a lower one. Tightness between all ports is ensured by rubber seal.



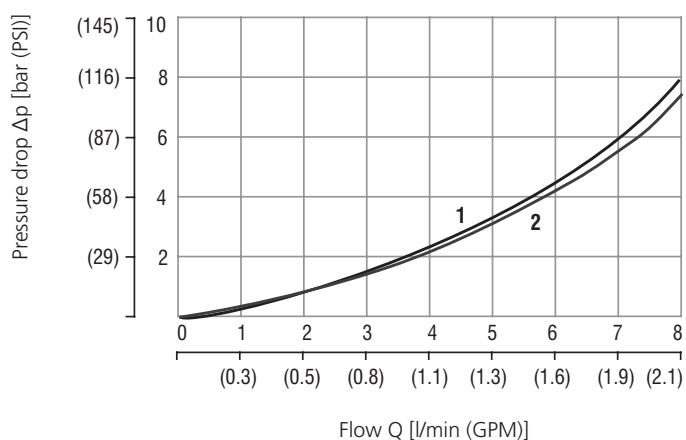
Technical Data

Valve size / Cartridge cavity		M12x1,5 / QD3
Max. flow rate	l/min (GPM)	8 (2.1)
Max. operating pressure	bar (PSI)	500 (7250)
Fluid temperature range (NBR)	°C (°F)	-30 +100 (-22 ... +212)
Fluid temperature range (FPM)	°C (°F)	-20 +120 (-4 ... +248)
Weight	kg (lbs)	0,01 (0.022)

	Data Sheet	Type
General information	GI_0060	products and operating conditions
Bodies for valves	In-line mounted	on request
Cavity details	SMT_0019	SMT-QD3*
Spare parts	SP_8010	

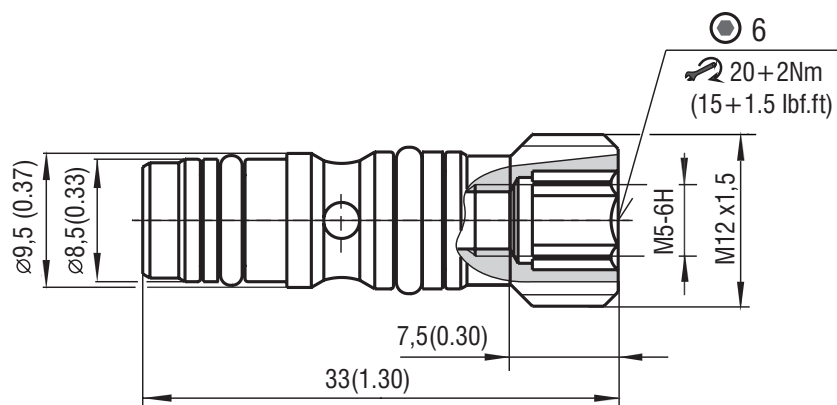
Characteristics measured at $v = 32 \text{ mm}^2/\text{s}$ (156 SUS)

Pressure drops $p-\Delta Q$



	Flow in direction
1	2 → 3
2	1 → 3

Dimensions in millimeters (inches)



Ordering Code

