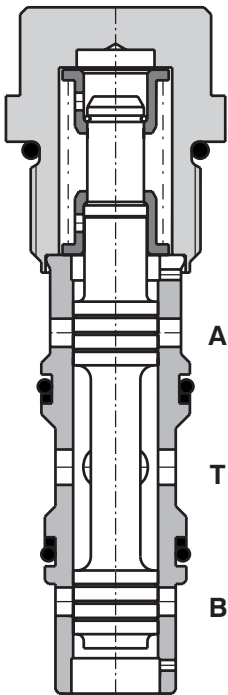


SD2H-LA3

M24x1.5 • Q_{max} 40 l/min (11 GPM) • p_{max} 320 bar (4600 PSI)

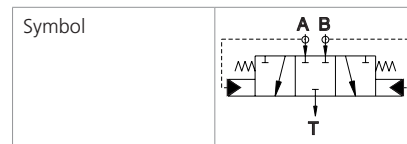


Technical Features

- › Hardened precision parts
- › High flow capacity
- › Simple and reliable design
- › Optional spring ranges
- › Automatic alternating fluid discharge from the low-pressure side of the circuit
- › Standard version zinc-coated with surface protection acc. to ISO 9227 (240 h salt spray)

Functional Description

3-way, 3-position spool-type, spring-centered hot oil shuttle valve, used typically on hydrostatic transmissions for hot oil discharge to a system cooler or tank.



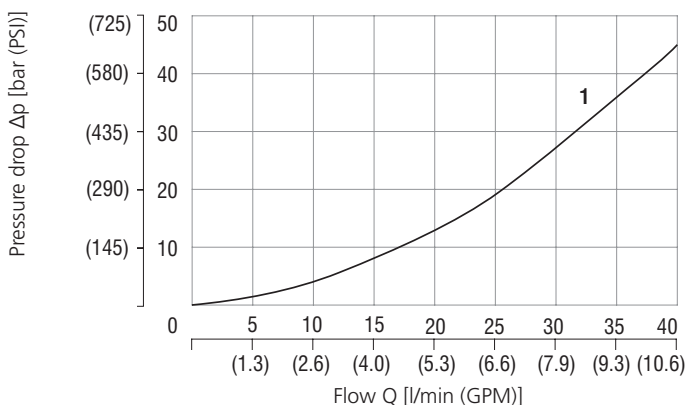
Technical Data

Valve size / Cartridge cavity		M24x1.5 / LA3	
Max flow	l/min (GPM)	40 (10.6)	
Max. operating pressure	bar (PSI)	320 (4640)	
Cracking pressure	bar (PSI)	7 (101.5)	12 (174.0)
Fluid temperature range (NBR)	°C (°F)	-30...+100 (-22...+212)	
Fluid temperature range (FPM)	°C (°F)	-20...+120 (-4...+248)	
Mass	kg (lbs)	0.23 (0.50)	

		Datasheet	Type
General information		GI_0060	Products and operating conditions
Valve bodies	In-line mounted	SB_0018	SB-LA3*
	Sandwich mounted	SB-04(06)_0028	SB-*LA3*
Cavity details		SMT_0019	SMT-LA3*
Spare parts		SP_8010	

Characteristics measured at $v = 32 \text{ mm}^2/\text{s}$ (156 SUS)

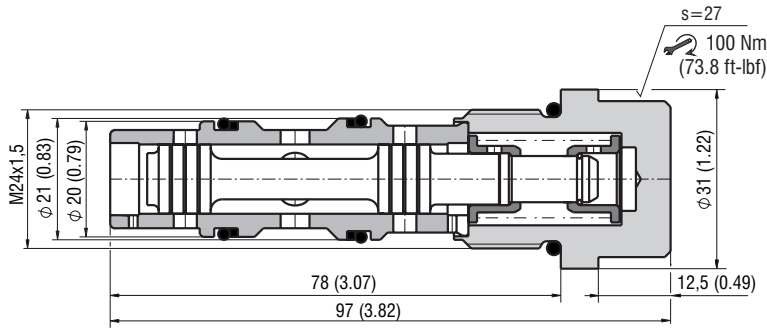
Pressure drop related to flow rate



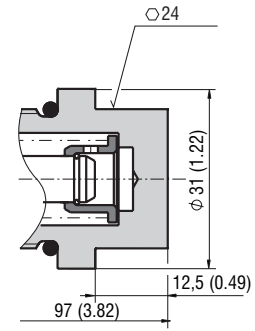
Connection	
1	B → T, A → T

Dimensions in millimeters (inches)

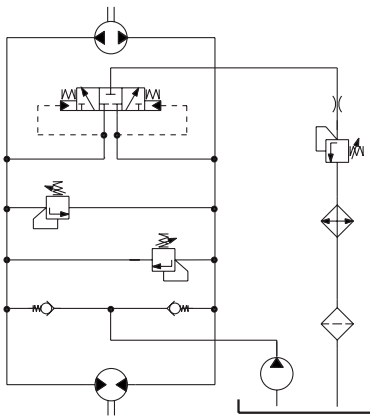
Cover cup - Standard



Cover cup - P



Application example



This hot oil shuttle valve is typically used in hydrostatic transmissions. It discharges approximately 10% of the closed-loop hydrostatic flow to the cooler or to the tank. The respective high pressure side of the circuit automatically pilots the valve to the discharge position of the low pressure side. The discharge amount is normally controlled by a downstream pressure relief valve which is typically set at 15 to 30 bar (200 to 400 PSI).

Ordering Code

SD2H-LA3 /		<input type="checkbox"/>	<input type="checkbox"/>	<input type="checkbox"/>	<input type="checkbox"/>	-	<input type="checkbox"/>
3/3 directional valve, hydraulically operated, spool-type, direct-acting, (hot oil) shuttle M24x1.5							
High performance		H					
Cracking pressure 7.0 bar (102 PSI) 12.0 bar (174 PSI)		070 120					
						Surface treatment A zinc-coated (ZnCr-3), ISO 9227 (240 h) B zinc-coated (ZnNi), ISO 9227 (520 h)	
						Seals NBR FPM (Viton)	
						Cover cup standard - across flats 27 mm HEX 24	
						No designation V	
						No designation P	