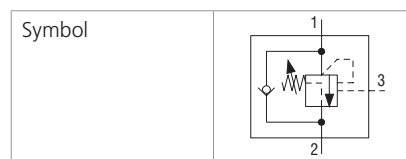


Technical Features

- › The valve prevents runaway ahead of the pump in the event of a negative load
- › Load-holding with leak-free closing poppet when directional valve is in neutral position
- › Pressure relief function protecting the actuator against overload and pressure peaks
- › Integrated check valve acting as an anti-cavitation valve
- › When installed into an actuator the valve can be used as a hose burst valve
- › Pressure relief section of the valve is not affected by back pressure
- › In the standard version, the valve is zinc-coated for 240 h protection acc. to ISO 9227

Functional Description

Poppet type, screw-in motion control valve designed to control the runaway of a negative load. The built-in check valve allows reverse flow into the actuator, which is protected by the internal pressure relief function. Back pressure at port 2 do not affect the pressure relief setting.



Technical Data

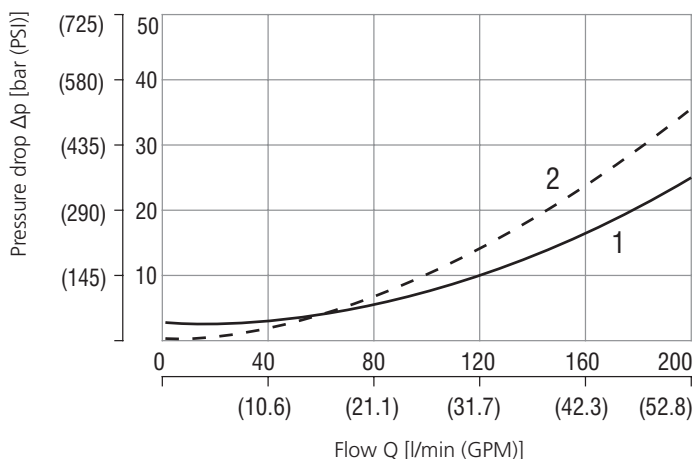
Valve size / Cartridge cavity		M38x2 / T3
Max. flow	l/min (GPM)	140 (37)
Max. load induced pressure	bar (PSI)	340 (4930)
Max. relief pressure	bar (PSI)	420 (6090)
Fluid temperature range	°C (°F)	-20 +90 (-4 ... +194)
Pilot ratio		4:1, 6:1
Internal Leakage	mil/min	0.3 nominal (5 drops per min)
Max. degree of fluid contamination	ISO 4406	Class 21/18/13
Mass	kg (lbs)	1.20 (2.65)

	Datasheet	Type
General information	GI_0060	Products and operating conditions
Valve bodies	In-line mounted	SB-T3*
Cavity details	SMT_0019	SMT-T3*
Spare parts	SP_8010	

Characteristics measured at v = 40 mm²/s (195 SUS)

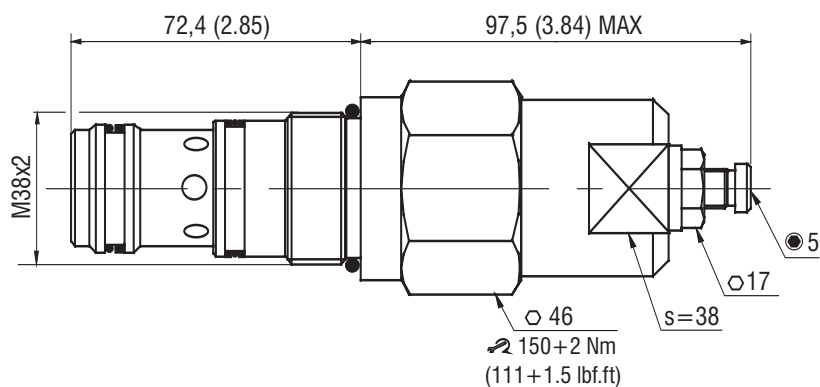
Pressure drop related to flow rate

Pilot ratio 4:1 and 6:1



Flow	
1	free flow (2→1)
2	pilot open (1→2)

Dimensions in millimeters (inches)



Ordering Code

