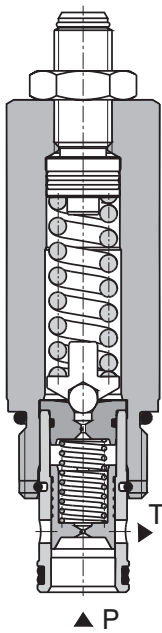


## Pressure Relief Valve, Spool Type, Pilot Operated

### SR4A-B2

7/8-14 UNF •  $Q_{max}$  100 l/min (26 GPM) •  $p_{max}$  350 bar (5100 PSI)



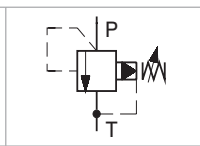
#### Technical Features

- › Low hysteresis, accurate pressure control and low pressure drop through CFD optimized flow paths
- › Wide pressure range up to 350 bar
- › High flow capacity
- › Hardened precision parts
- › Ideal for use as control valve where accuracy and repeatability is required
- › Adjustable by allen key hand screw
- › In the standard version, the valve is zinc-coated for 240 h protection acc. to ISO 9227

#### Functional Description

A pilot operated, spool type hydraulic relief valve in the form of a screw-in cartridge intended for use as a pressure limiting device. Fast-acting with low hysteresis. Because of the absence of any internal seals, the valve shows excellent reseating and repeatability characteristics. It may be used as a main pressure control element but due to its two stage design it is not recommended for safety applications where operating speed is critical.

Symbol



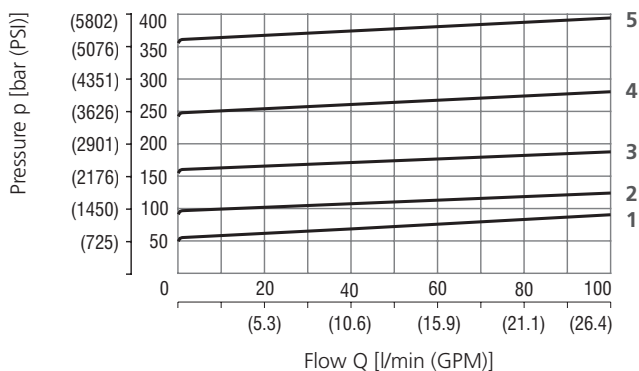
#### Technical Data

| Valve size / Cartridge cavity |             | 7/8-14 UNF-2A / B2         |
|-------------------------------|-------------|----------------------------|
| Max. flow                     | l/min (GPM) | 100 (26)                   |
| Max. operating pressure       | bar (PSI)   | 350 (5080)                 |
| Max. pressure (T port)        | bar (PSI)   | 100 (1450)                 |
| Fluid temperature range (NBR) | °C (°F)     | -30 ... +100 (-22 ... 212) |
| Fluid temperature range (FPM) | °C (°F)     | -20 ... +120 (-4 ... 248)  |
| Mass                          | kg (lbs)    | 0.24 (0.53)                |

|                             |                  | Datasheet      | Type                              |
|-----------------------------|------------------|----------------|-----------------------------------|
| General information         |                  | GP_0060        | Products and operating conditions |
| Valve bodies                | In-line mounted  | SB_0018        | SB-B2*                            |
|                             | Sandwich mounted | SB-04(06)_0028 | SB-*B2*                           |
| Cavity details / Form tools |                  | SMT_0019       | SMT-B2*                           |
| Spare parts                 |                  | SP_8010        |                                   |

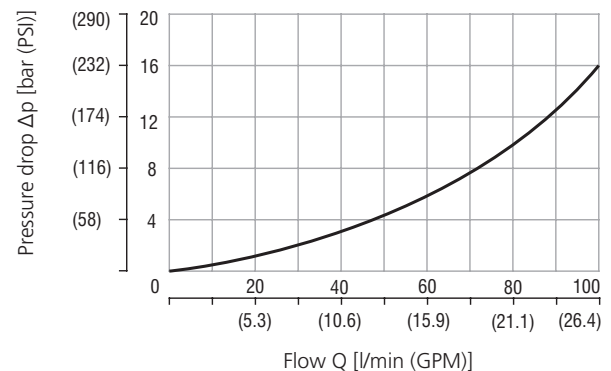
#### Characteristics measured at $v = 32 \text{ mm}^2/\text{s}$ (156 SUS)

##### Relief pressure related to flow rate



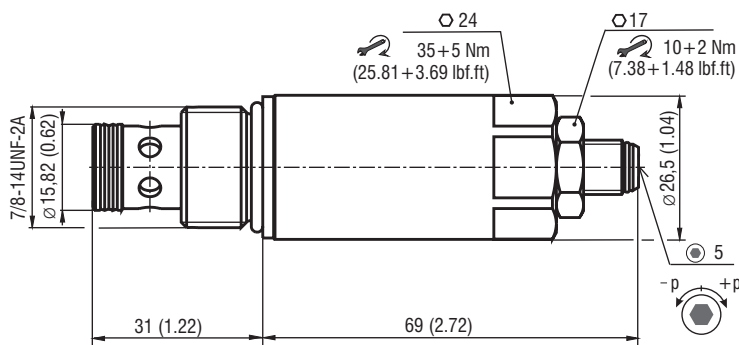
|   | Pressure range |
|---|----------------|
| 5 | 35             |
| 4 | 25             |
| 3 | 16             |
| 2 | 10             |
| 1 | 6              |

##### Minimum set and circulation pressure

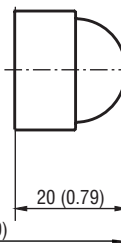


**Dimensions** in millimeters (inches)

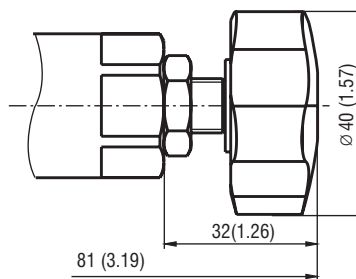
**Model S**



**Model T**



**Model RP**



**Ordering Code**

SR4A-B2 /     -

Pressure relief valve, spool type, pilot operated  
7/8-14 UNF

Model  
High performance

Pressure range  
up to 63 bar (910 PSI)  
up to 100 bar (1450 PSI)  
up to 160 bar (2320 PSI)  
up to 250 bar (3630 PSI)  
up to 350 bar (5080 PSI)

6  
10  
16  
25  
35

No designation  
V

S  
T  
RP

Surface treatment  
A zinc-coated (ZnCr-3), ISO 9227 (240 h)  
B zinc-coated (ZnNi), ISO 9227 (520 h)

Seals  
NBR  
FPM (Viton)

Adjustment option  
allen key (hex. 5), without protective cap  
allen key (hex. 5), with protective cap  
hand screw, plastic