

# GGIL SERIES

## In-line rotary couplers

### INTRODUCTION

Holmbury's GGIL Series in-line rotary couplers are designed for in-line use on hydraulic circuits. Using a rotary coupler in the hydraulic line stops the hose twisting, limiting stress and increasing hose lifespan.

### CONSTRUCTION

- Carbon steel with trivalent plating
- Fitted with Nitrile seals
- Also available in AISI 316 stainless steel (See SRIL Series)

### FEATURES

- Reduces torsional forces
- Can also be used in applications that are required to rotate but not under pressure, such as hose reels
- Spindle is carried on a roller bearing and has a low friction shaft seal that can rotate at maximum pressure with low torque

### SPECIFICATIONS

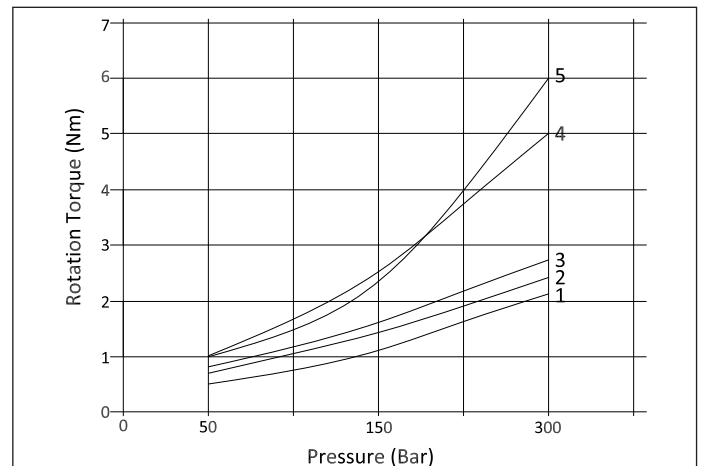
- Operating temperatures (with Nitrile seals): -40°C (-40°F) to 106°C (223°F)

### APPLICATIONS

- Designed for usage in general hydraulic systems, machine tools, test equipment, agricultural, and mobile hydraulics



### ROTATIONAL TORQUE

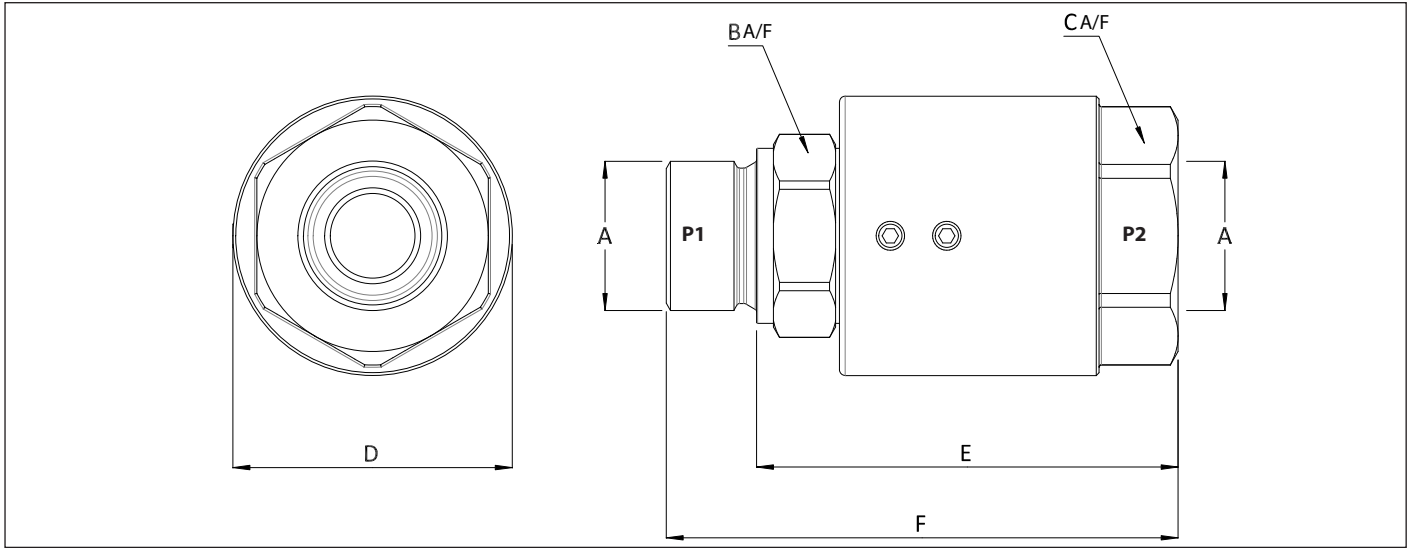


### ORDER CODES

<b>Series</b>		GGIL - 19 - 12		G	M - 12	G	<b>Thread Type (Female Only)</b>		
GG90							G = BSPP N = NPT S = SAE		
<b>Body Size</b>								<b>Thread Size (P2)</b>	
06 - 1/4"	25 - 1"							04 - 1/4"	16 - 1"
10 - 3/8"	32 - 1 1/4"							06 - 3/8"	20 - 1 1/4"
12 - 1/2"	40 - 1 1/2"							08 - 1/2"	24 - 1 1/2"
19 - 3/4"	50 - 2"							10 - 5/8"	32 - 2"
		<b>Thread Size (P1)</b>						12 - 3/4"	
		04 - 1/4"	16 - 1"						
		06 - 3/8"	20 - 1 1/4"						
		08 - 1/2"	24 - 1 1/2"	<b>Thread Type</b>					
		10 - 5/8"	32 - 2"	G = BSPP	S = SAE				
		12 - 3/4"		N = NPT	J = JIC				



## DRAWING



## DIMENSIONS

Size	Thread Size (A)*	B	C	ØD	E	F	Maximum Working Pressure	Maximum Flow Rate	Maximum Rotational Speed
		Dimensions in mm					Bar		
		Dimensions in Inches					Psi	L/Min	RPM
GGIL-06	1/4"	19	30	34	52	63	400	25	500
		0.7	1.2	1.3	2.0	2.5	5800		
GGIL-10	3/8"	24	32	37.6	54.8	66.5	400	45	400
		0.9	1.3	1.5	2.2	2.6	5800		
GGIL-12	1/2"	27	32	39.5	56.6	70.8	360	80	370
		1.1	1.3	1.6	2.2	2.8	5220		
GGIL-19	3/4"	32	41	49.5	74.8	90.8	310	120	280
		1.3	1.6	1.9	2.9	3.6	4495		
GGIL-25	1"	41	46	54.5	80.8	100.2	280	150	230
		1.6	1.8	2.1	3.2	3.9	4060		
GGIL-32	1 1/4"	50	54.7	59.7	78.5	98.2	250	200	200
		2.0	2.2	2.4	3.1	3.9	3625		
GGIL-40	1 1/2"	55	65	70	85	107	210	250	170
		2.2	2.6	2.8	3.3	4.2	3045		
GGIL-50	2"	70	75	79.5	92	117	180	300	140
		2.8	3.0	3.1	3.6	4.6	2610		

\*Dimensions based on BSPP threads

PSI= Bar x14.5 Inches= mm/25.4

† Note: The maximum rotational speed quoted is for zero pressure and hydraulic oils